

# Ride On Reimagined: Montgomery County's Comprehensive Bus Network Study

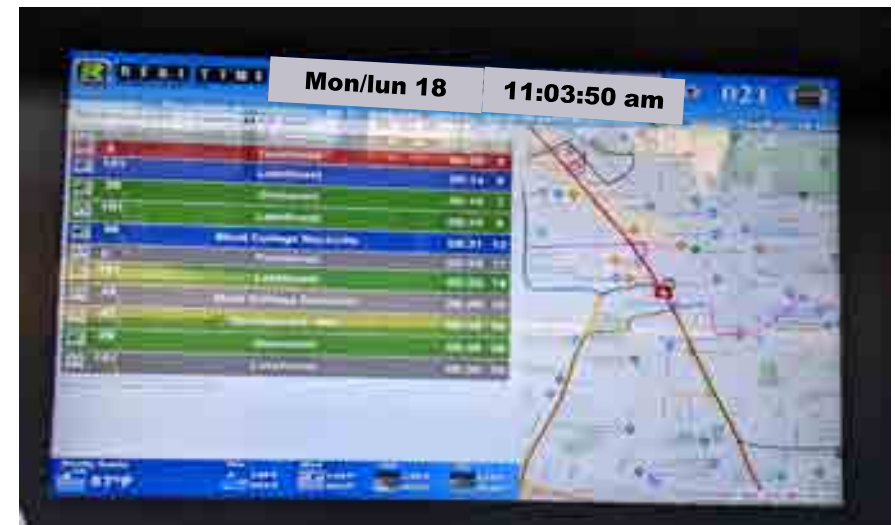
Stakeholders Meeting #5

September 18, 2023



# Meeting Agenda

- Opening Remarks – Deanna Archey, MCDOT Transit Services
- Introduction: Study and Goals
- Draft Network Concept Update
- Draft Concept Online Map
- Public Engagement
- Potential Innovation: Automated Vehicle Applications
- Next Steps



# Zoom Etiquette



Please remain on mute until you are called on to speak.

Closed Captioning is available through Live Transcript.



This meeting is being recorded. The transcript will be available to the public.

Type your questions and comments into the Q&A tool.



Raise your Hand or dial \*9 on your phone during the Q&A.



# Opening Remarks

- Deanna Archey, Montgomery County Department of Transportation Transit Services

# Introduction

# What is Ride On Reimagined?

- In-depth look at Montgomery County's entire existing and planned transit system
- Recommend systemwide (Ride On and Metrobus) changes addressing current and future needs of the community
- Tool to address County priorities to improve racial equity and prevent climate change



# Ride On Reimagined Goals

Safety and Vision Zero	Environment and Climate Resiliency	Economic Development and Equitable Access
1-1: Enhance Pedestrian and Rider Safety	2-1: Shift Mode Share from Auto to Bus	3-1: Increase Access and Connections for All Users
	2-2: Position Transit as the First Choice in Montgomery County	3-2: Implement Targeted Equity Actions
1-2: Improve Bus Operations Safety	2-3: Plan Network to Meet Environmental Goals	3-3: Connect Transit with Economic Development
	2-4: Promote an Ongoing Evaluation of the Network	3-4: Improve Passenger Experience

# Draft Network Concept Update

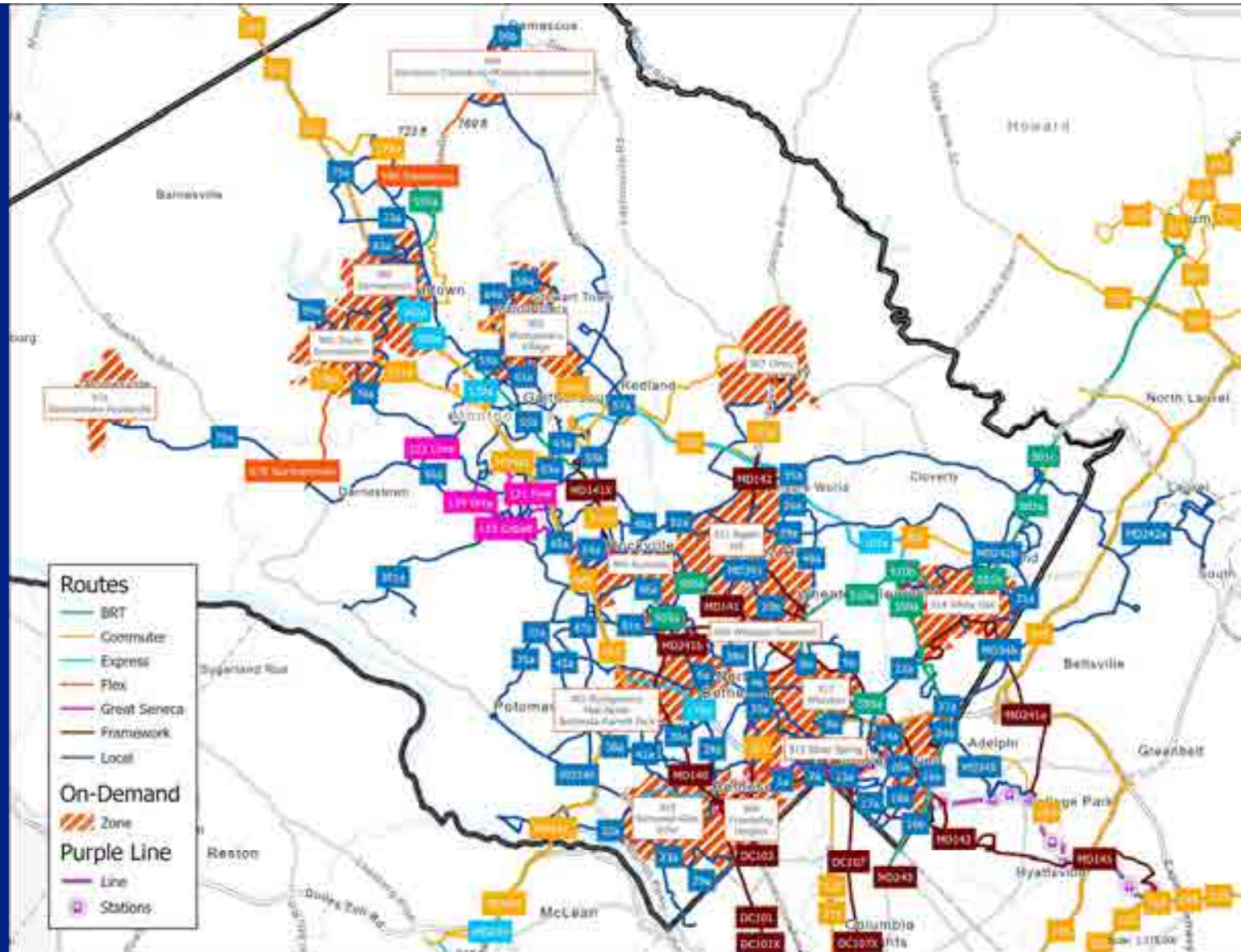


# Service Classifications

Service Type	Frequency				Span of Service			Typical Stop Spacing
	Weekday		Saturday	Sunday	Weekday	Saturday	Sunday	
	Peak	Off-peak						
<b>BRT</b>	8	15	15	15	5AM-1AM	5AM-1AM	5AM-1AM	1/2 mi. to 1 mi.
<b>Framework / High Capacity</b>	10-15	15	30	30	5AM-7 PM	7AM-7 PM	7AM-7 PM	1/2 mi. to 1 mi.
<b>Express</b>	10-15	15	15	30	5AM-12AM	5AM-12AM	6AM-10 PM	1/8 to 1/4 mi.* / 2+ mi.
<b>Commuter</b>	30	-	-	-	6AM-9AM 3 PM-7 PM	-	-	1/8 to 1/4 mi.* / 2+ mi.
<b>Coverage / Local</b>	15-30	30	30	30	5:30AM-11 PM	6AM-11 PM	6AM-11 PM	1/8 to 1/4 mi.
<b>Microtransit (Flex)</b>	N/A	N/A	N/A	N/A	6AM-7:30 PM	6AM-7:30 PM	Market Demand	curb-to-curb

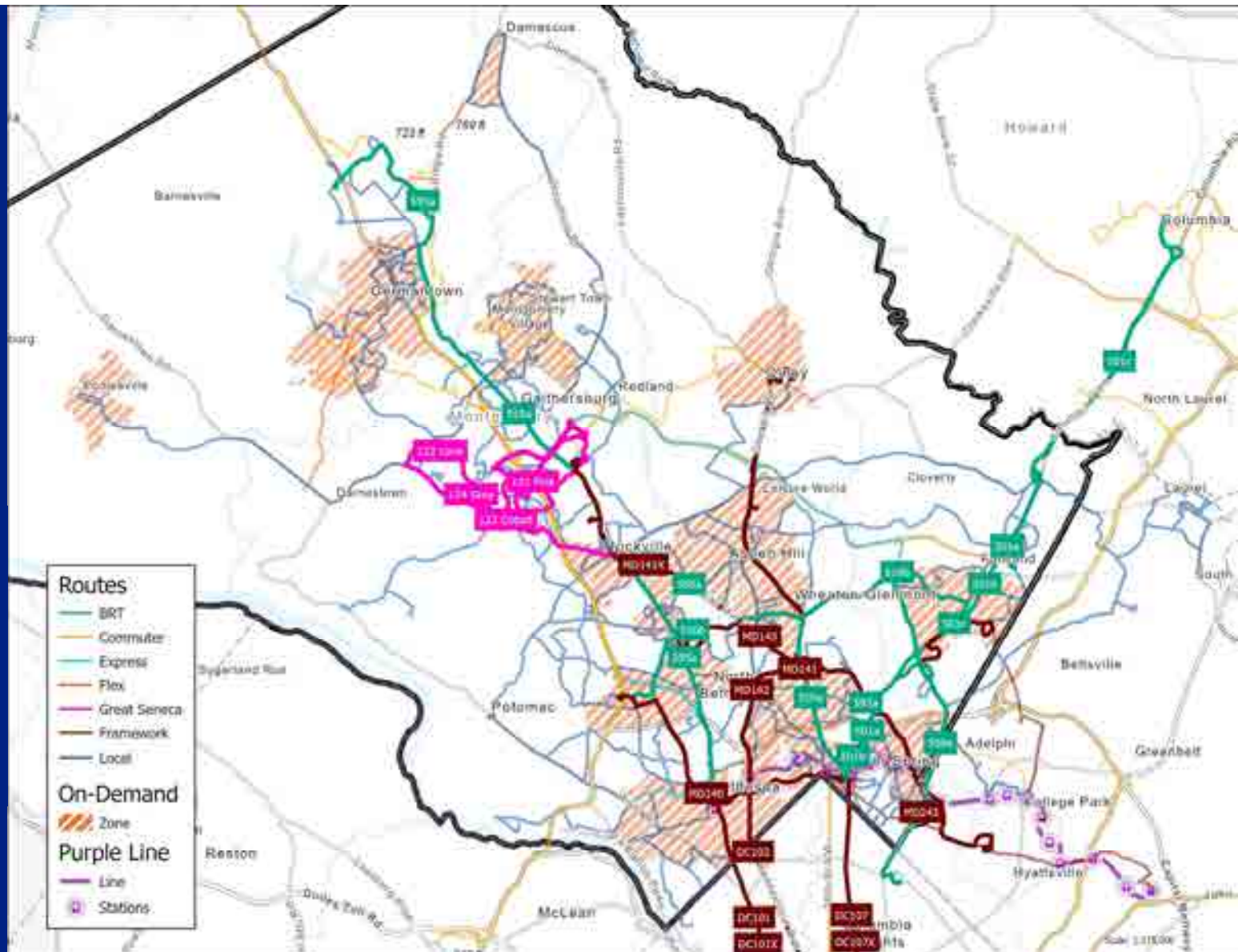
*\*for pick up; greater for non-stop and limited portions/drop-offs*

# Revised Draft Network Concept



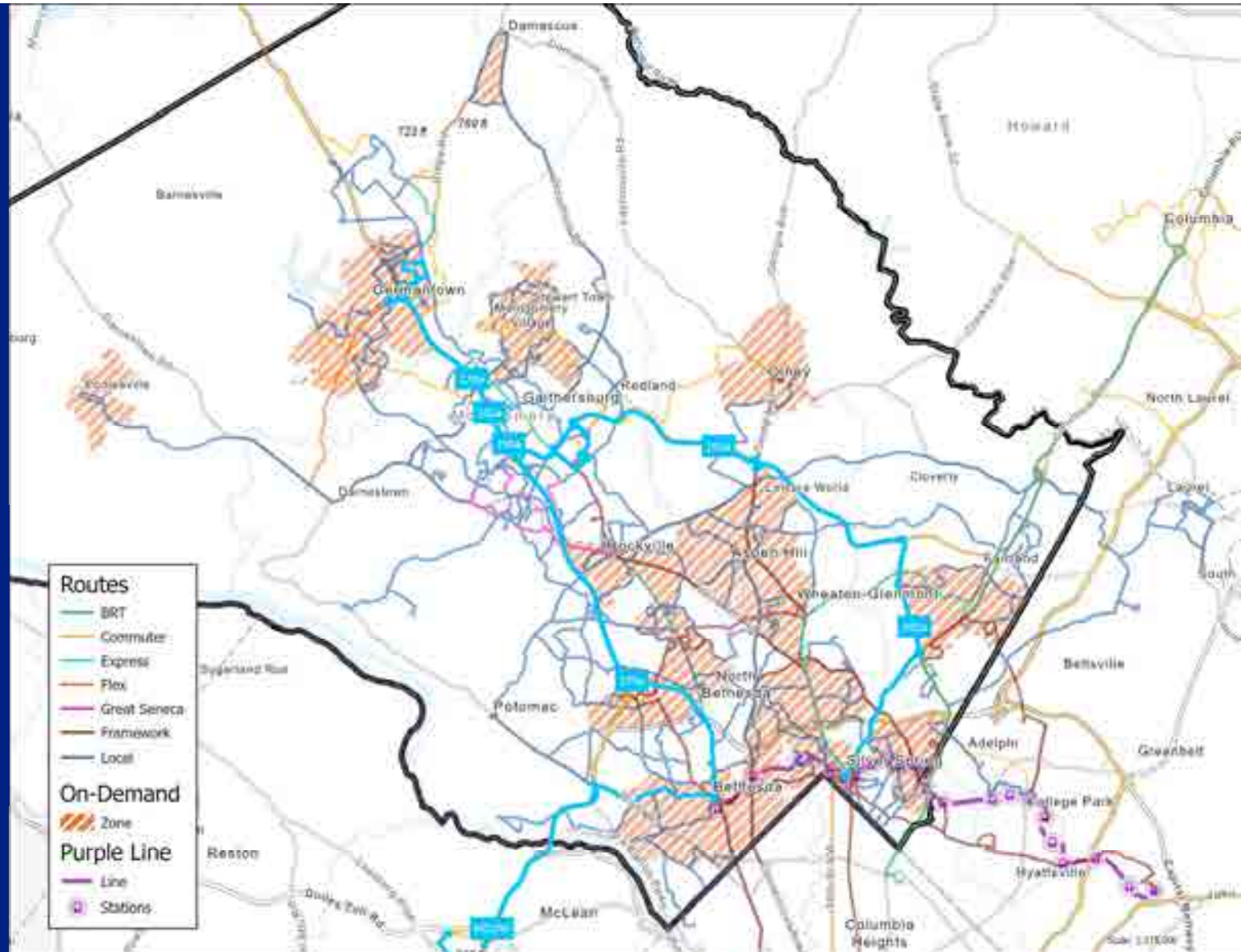
# FLASH, Great Seneca, High Capacity, Purple Line

- Revised with updated Metro Better Bus routings for Framework / High-Capacity lines



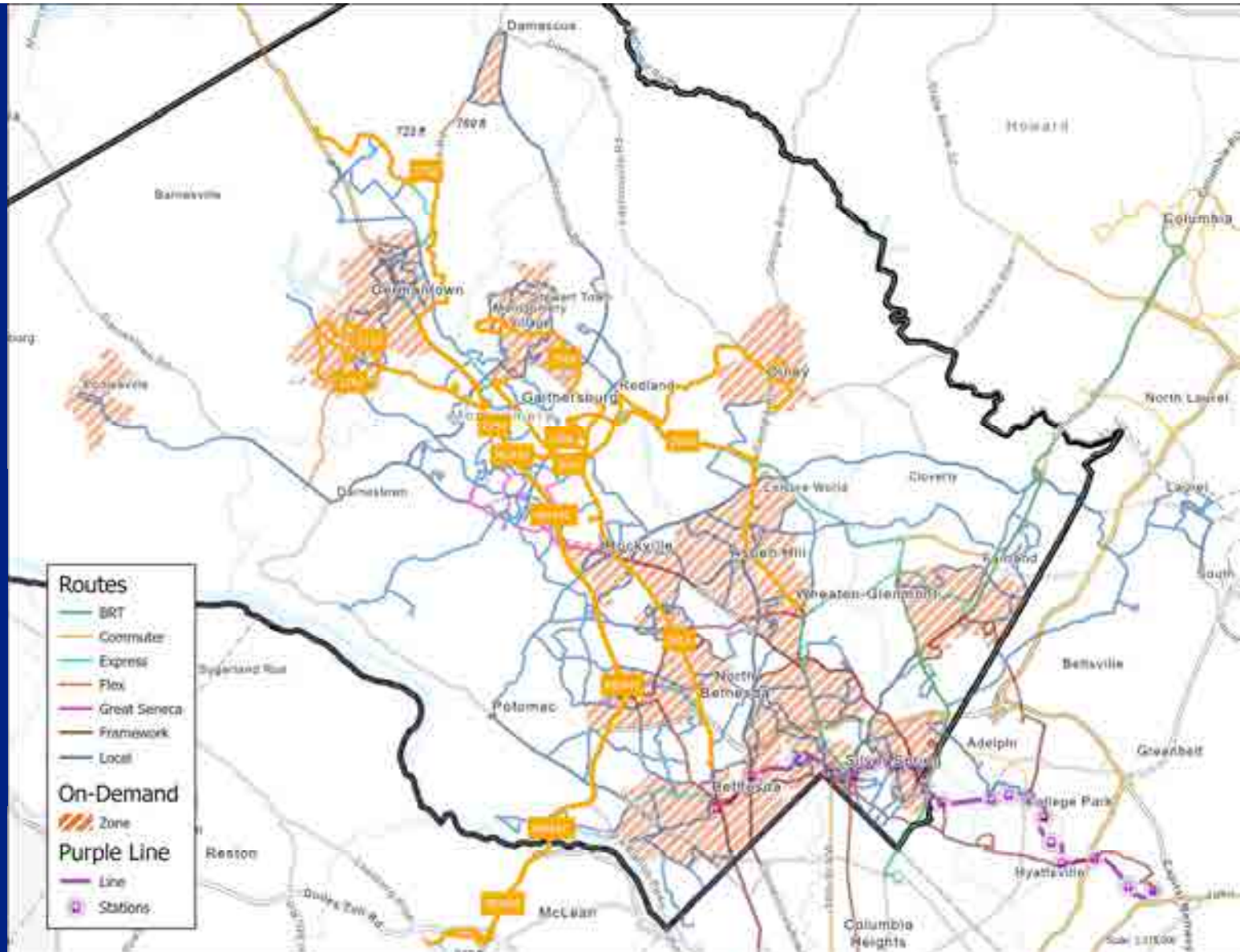
# Express

- Revised with updated Metro Better Bus routings for MD240 Bethesda-Tysons



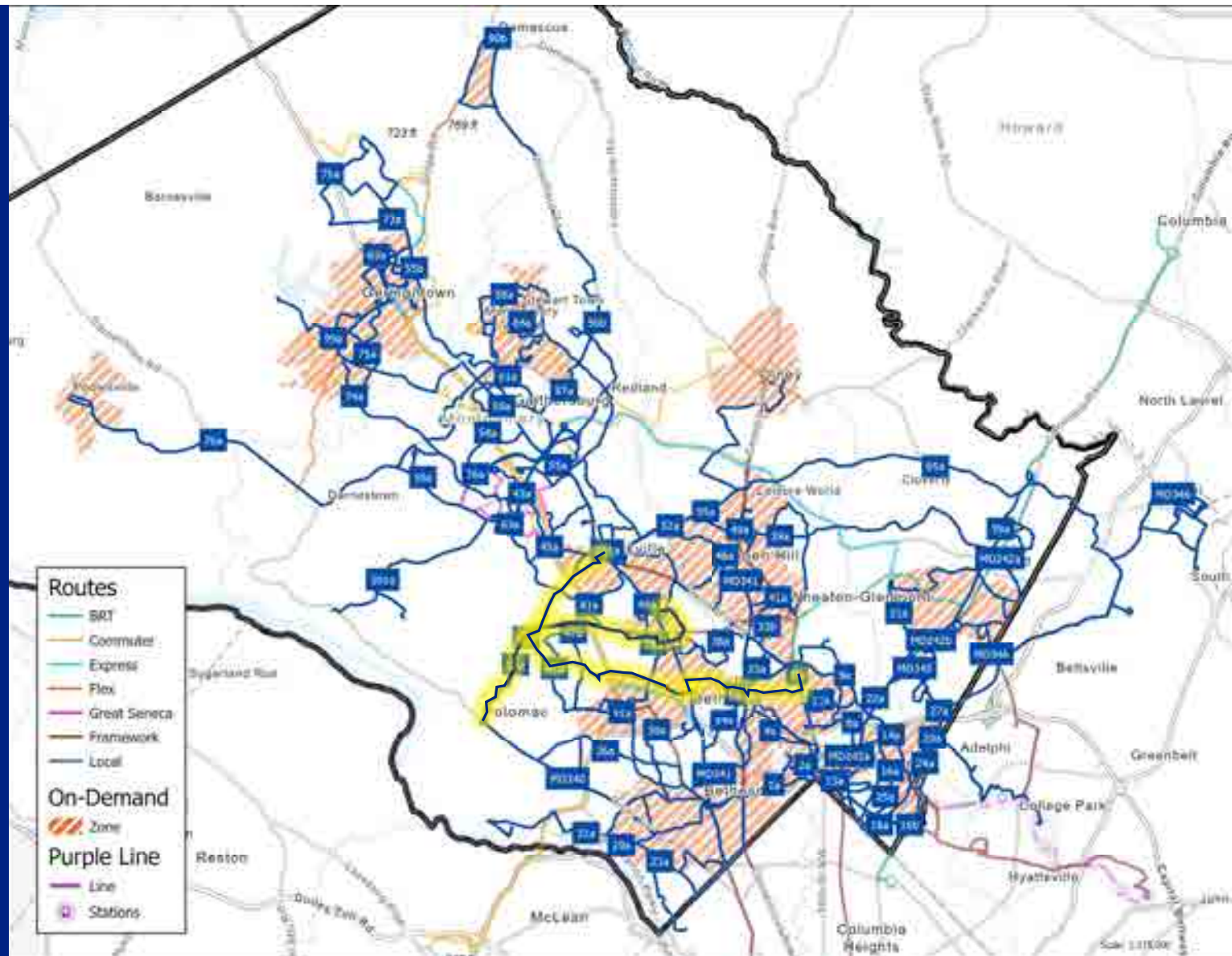
# Commuter

- Revised with updated Metro Better Bus routings for MD442 Shady Grove-Tysons



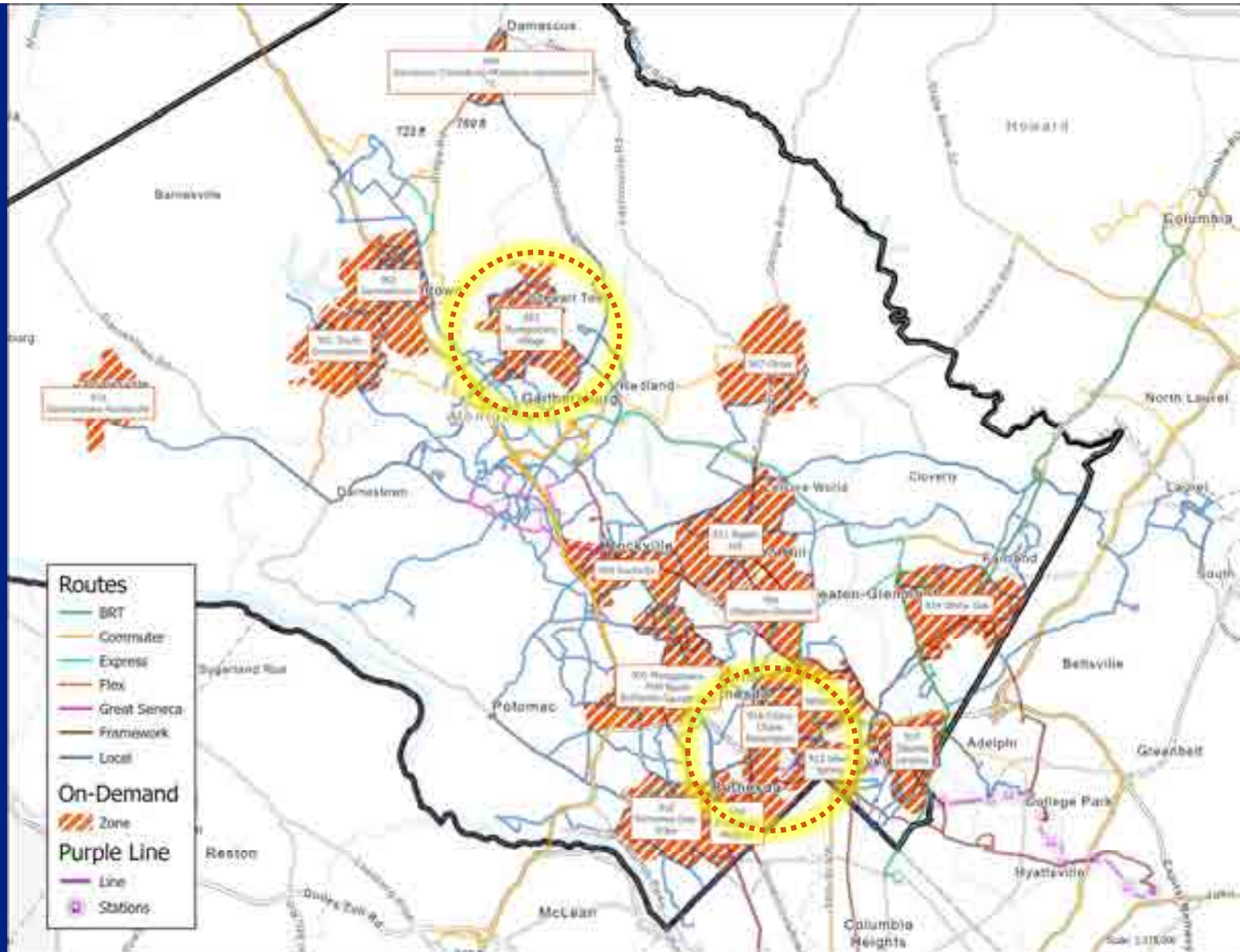
# Coverage / Local

- Revised with updated Metro Better Bus routings:
- Falls Rd. service with:
  - 35a Potomac-North Bethesda-Twinbrook
  - 37a Rockville-Grosvenor-Wheaton (via Falls Rd)



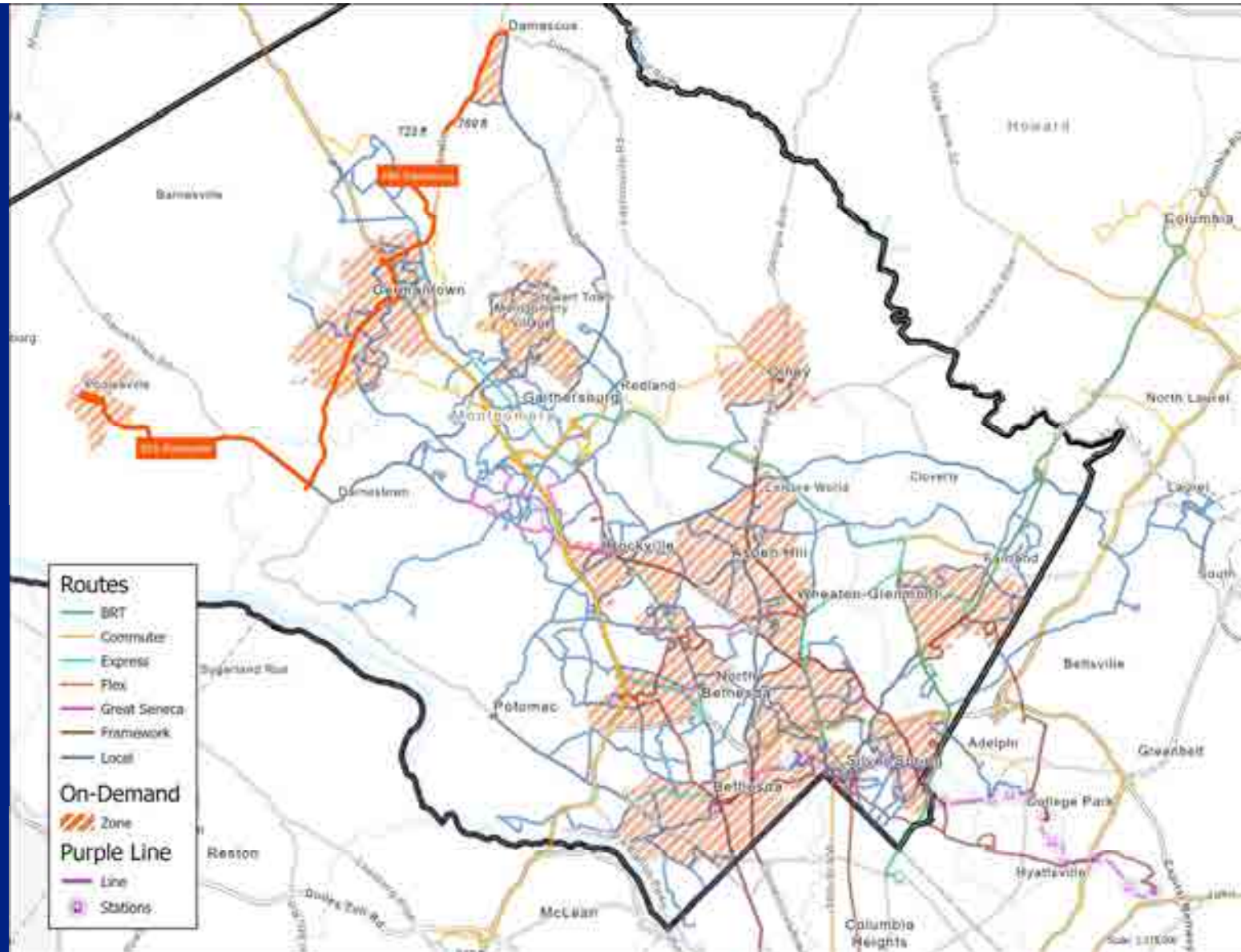
# Flex Zones

- Additional coverage with:
  - 916 Chevy Chase-Kensington zone
  - 903 Montgomery Village zone extended north



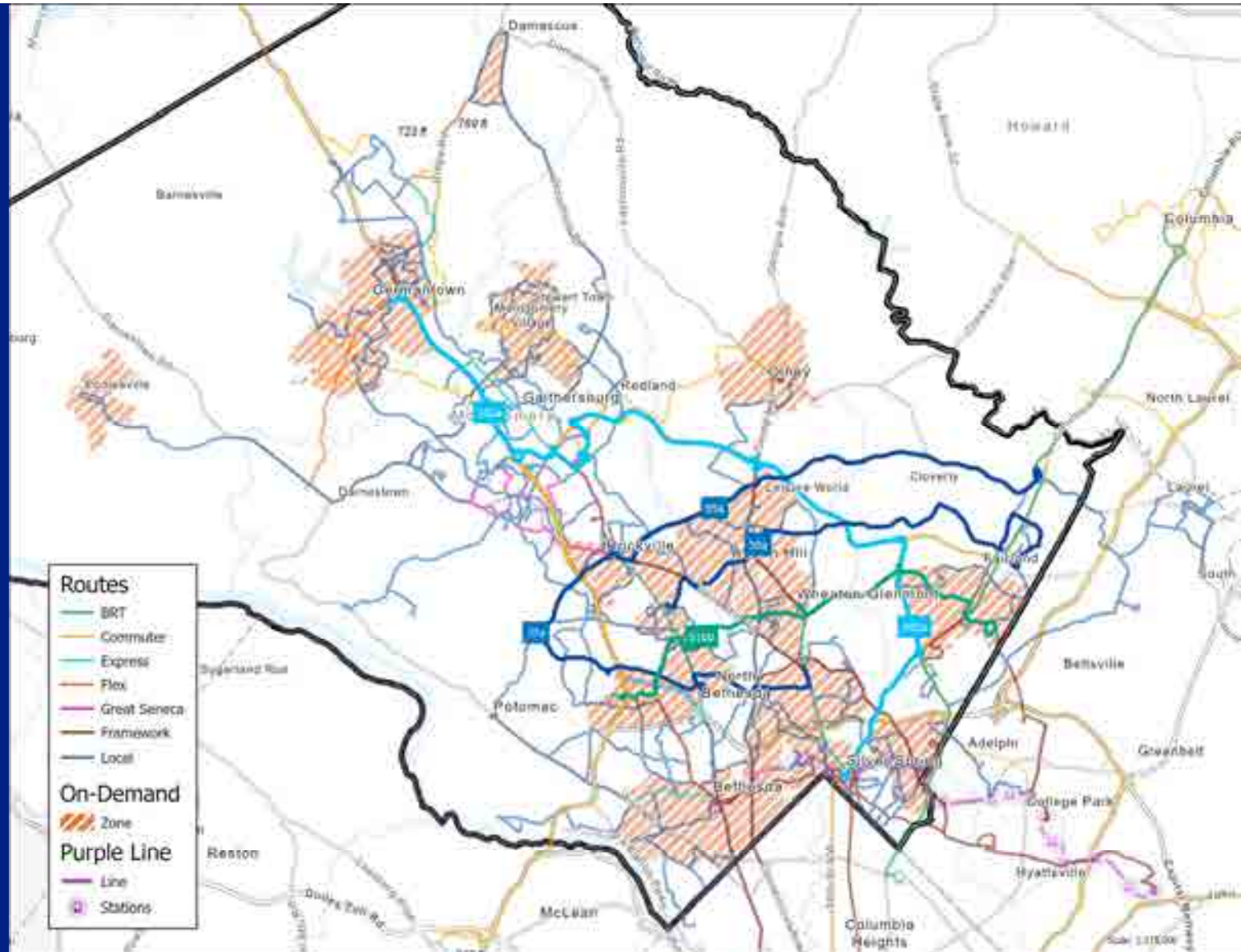
# Flex

- No change to the two proposed flex-fixed services:
  - 976 Poolesville
  - 990 Damascus

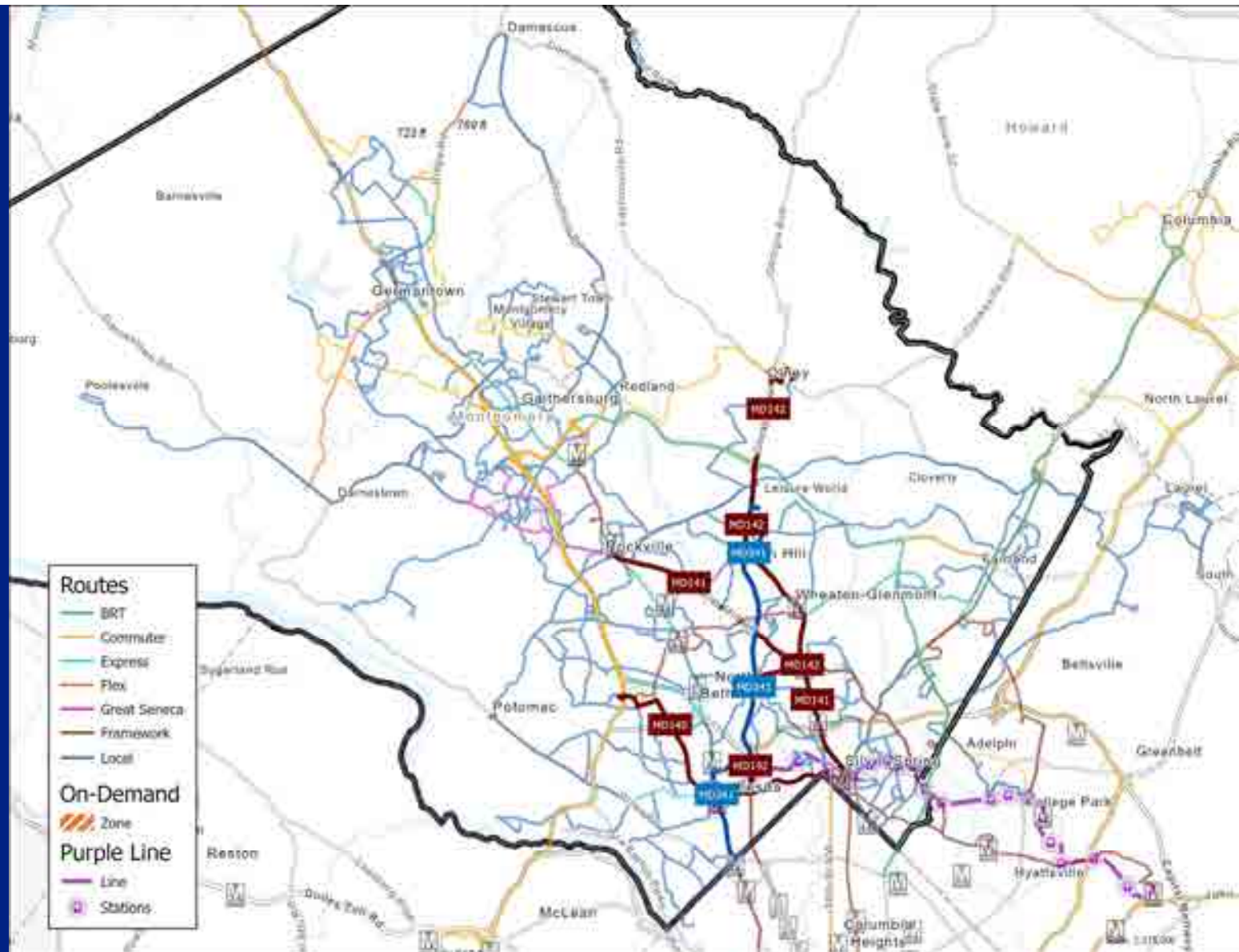




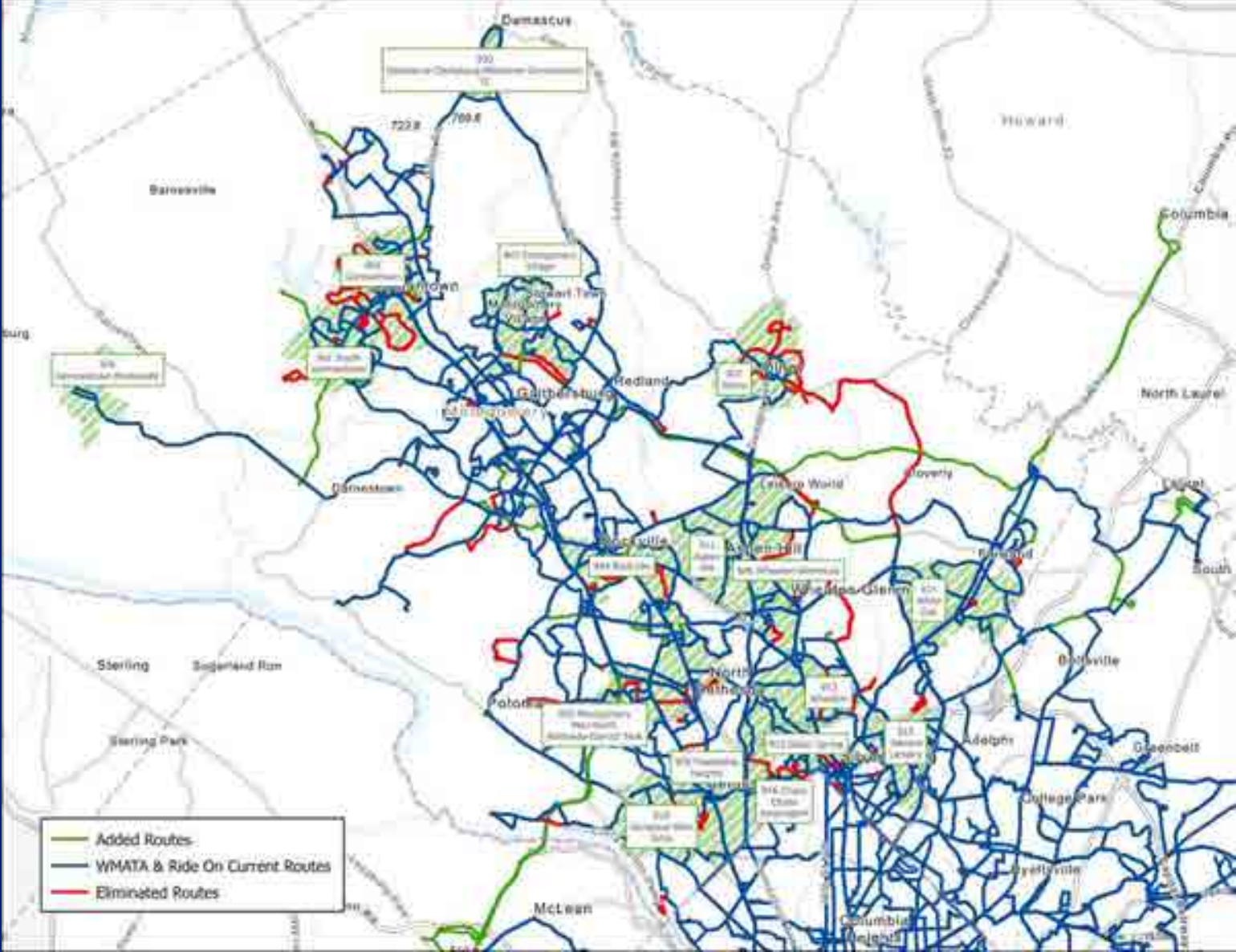
# New East-West Routes



# Links Between the Red Line



# Added and Eliminated Route Segments



# Draft Concept Online Map

# Online Network Concept Map

- **Accessible via:**
  - [Ride On Reimagined Dashboard \(arcgis.com\)](https://arcgis.com)
- **Interactive online map featuring:**
  - Existing Ride On Routes
  - Existing Metrobus Routes
  - Proposed Routes and Flex Zones
- **Comments and feedback on the Network Concept encouraged via:**
  - [www.montgomerycountymd.gov/DOT-Transit/reimagined/](http://www.montgomerycountymd.gov/DOT-Transit/reimagined/)



# Public Engagement

# Virtual Public Meeting and In-Person Pop Up Events

- **Virtual Public Open House: Thursday, September 28<sup>th</sup> from 6:30 – 8:00 p.m.**
- **Pop-Up Events:**

Location	Date	Time
Germantown Transit Center	Mon., October 2 <sup>nd</sup>	7:00 – 10:00 a.m.
Rockville Metro Station	Thurs., October 5 <sup>th</sup>	11:00 a.m. – 2:00 p.m.
Bethesda Metro Station	Tues., October 10 <sup>th</sup>	7:00 – 10:00 a.m.
Shady Grove Metro	Wed., October 11 <sup>th</sup>	11:00 a.m. – 2:00 p.m.
Silver Spring Transit Station	Tues., October 17 <sup>th</sup>	7:00 – 10:00 a.m.
Wheaton Metro Station	Thurs., October 19 <sup>th</sup>	3:00 – 6:00 p.m.
Lakeforest Transit Center	Mon., October 23 <sup>rd</sup>	3:00 – 6:00 p.m.
White Oak Transit Center	Wed., October 25 <sup>th</sup>	7:00 – 10:00 a.m.



# Potential Innovation: Automated Vehicle Applications



# Automation: Large Vehicle

- CTfastrak, Connecticut's 9.2-mile BRT
  - Exclusive guideway
  - Current mix of bus types (30', 40', 60')
- FTA demonstration (3, 40' AV buses)
  - Platooning to replace 1, 60' artic needed in peaks with 2, 40' buses / break off-peak
  - Fully-automated, up to 40 mph
  - Testing this year



**Application to Consider:** Platooning two 40' Flash buses during peak demand instead of a 60' Flash fleet

# Automation: Small Vehicle

- Shuttle
  - Closed loop and mixed-traffic
  - Slow speed (10 - 30 mph)
  - Relay (Mosaic – Dunn Loring Metro), ended June
  - ADA access remains a challenge



**Application to Consider:** Partnership campus shuttles to transit centers (examples: MC Rockville, USG)

# Automation: Small Vehicle

- Demand Response / Microtransit
  - University District, Houston Metro
    - Phase 2 w/ cutaway later this year
  - RAPID (Rideshare, Automation, and Payment Integration Demonstration), Arlington, TX
    - 1 mi<sup>2</sup> flex zone (Via app)
    - 4 Lexus hybrid SUVs + 1 electric Polaris GEM buggy
  - Still require attendant for ADA access



**Application to Consider:** Flex, although without automated ADA, savings is questionable

# Next Steps

# Next Steps

- Share the revised network concept at 8 popup events and a virtual public meeting
- Revise/refine network concept based on your feedback
- Further revise the network concept, advancing to the Service & Implementation Plan



# Zoom Etiquette



Please remain on mute until you are called on to speak.

Closed Captioning is available through Live Transcript.



This meeting is being recorded. The transcript will be available to the public.

Type your questions and comments into the Q&A tool.



Raise your Hand or dial \*9 on your phone during the Q&A.



# THANK YOU

Contact Ride On Reimagined

Website: <https://www.montgomerycountymd.gov/DOT-Transit/reimagined/>

Email: [RideOn.Reimagined@montgomerycountymd.gov](mailto:RideOn.Reimagined@montgomerycountymd.gov)

