



October 22, 2025

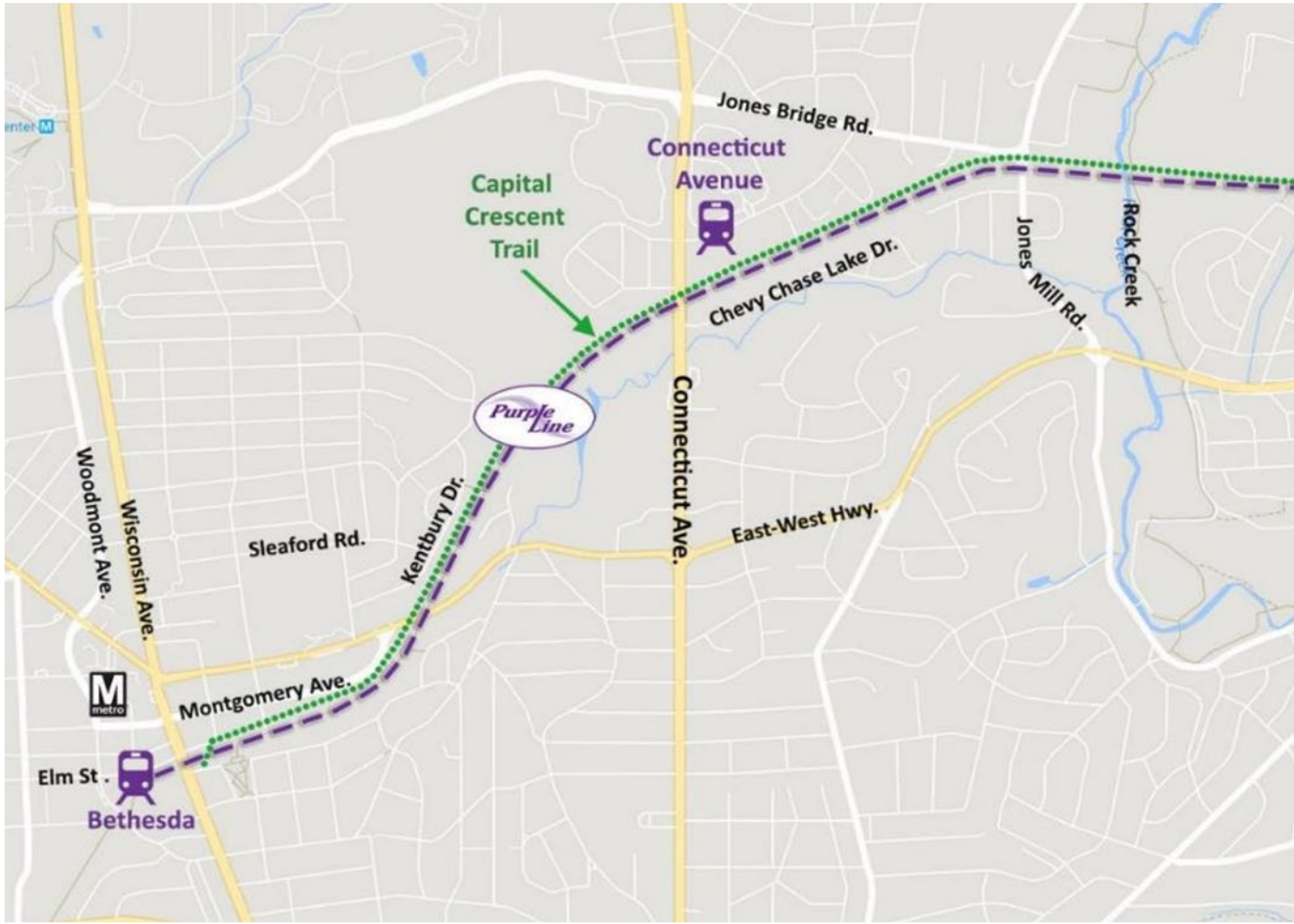
North Bethesda Transportation Management District

OVERVIEW



Progress Video
Progress Update
Construction Update
Work Completed
Upcoming Work
Community Engagement
Questions & Answers

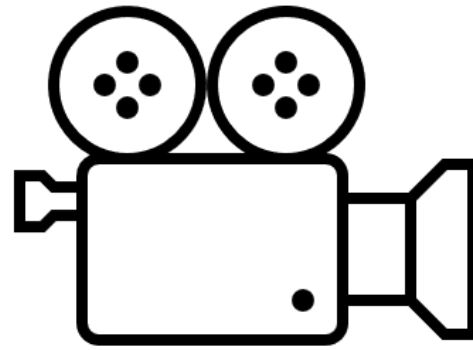
BETHESDA | CHEVY CHASE STATIONS



Bethesda

Connecticut Avenue

FALL PROGRESS VIDEO





PROJECT PROGRESS



82% complete!

19 miles sidewalk
installed

70% track installed

All 21 stations
under construction

16 station
canopies installed

Main Operations
and Maintenance
Facility completed

Secondary OMF
under construction



23 of 28 LRVs delivered
to the Glenridge OMF

PROJECT TIMELINE



2022

2023

2024

2025

2026

2027

Spring

MTS
Contract
Signed

Summer

MTS begins
Full-Scale
Construction

Spring

Light Rail
Delivery
to OMF

Summer

Complete
Test Track

Spring

Start
Dynamic
Testing

Winter

All 28
LRVs
Delivered

Spring

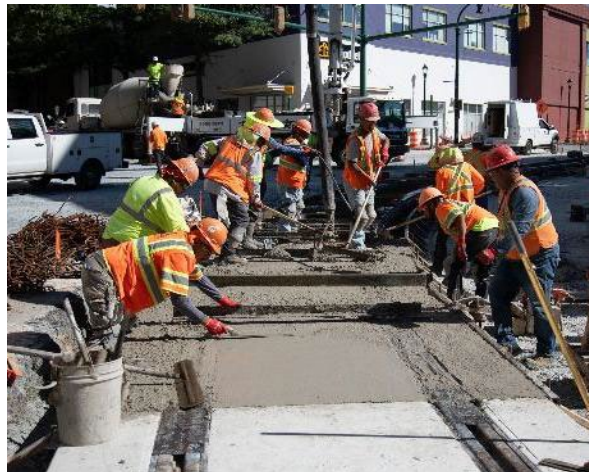
Complete
Track
Installation

Spring

Start
End-to-End
System
Testing

Winter

Passenger
Service
Begins



BETHESDA SHAFT MILESTONE



*Purple
Line*

Purple Line crews completed the excavation, including blasting, for the 150-foot shaft and the WMATA Red Line connection cavern!

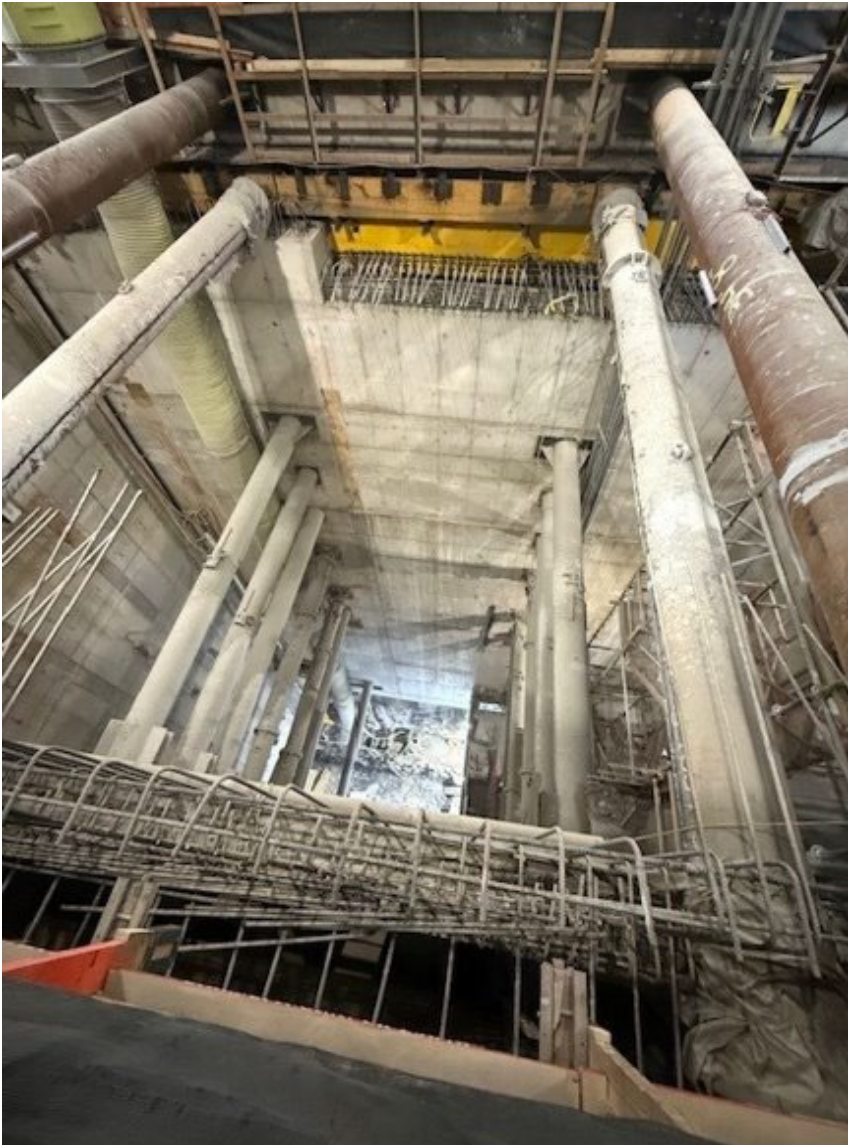
About 2.5 million pounds, or 13,000 cubic yards of rock!



BETHESDA SHAFT



*Purple
Line*



Recent and Ongoing Work:

- Completed blasting and major excavation.
- Continued waterproofing of cavern.
- Began concrete placement in cavern.

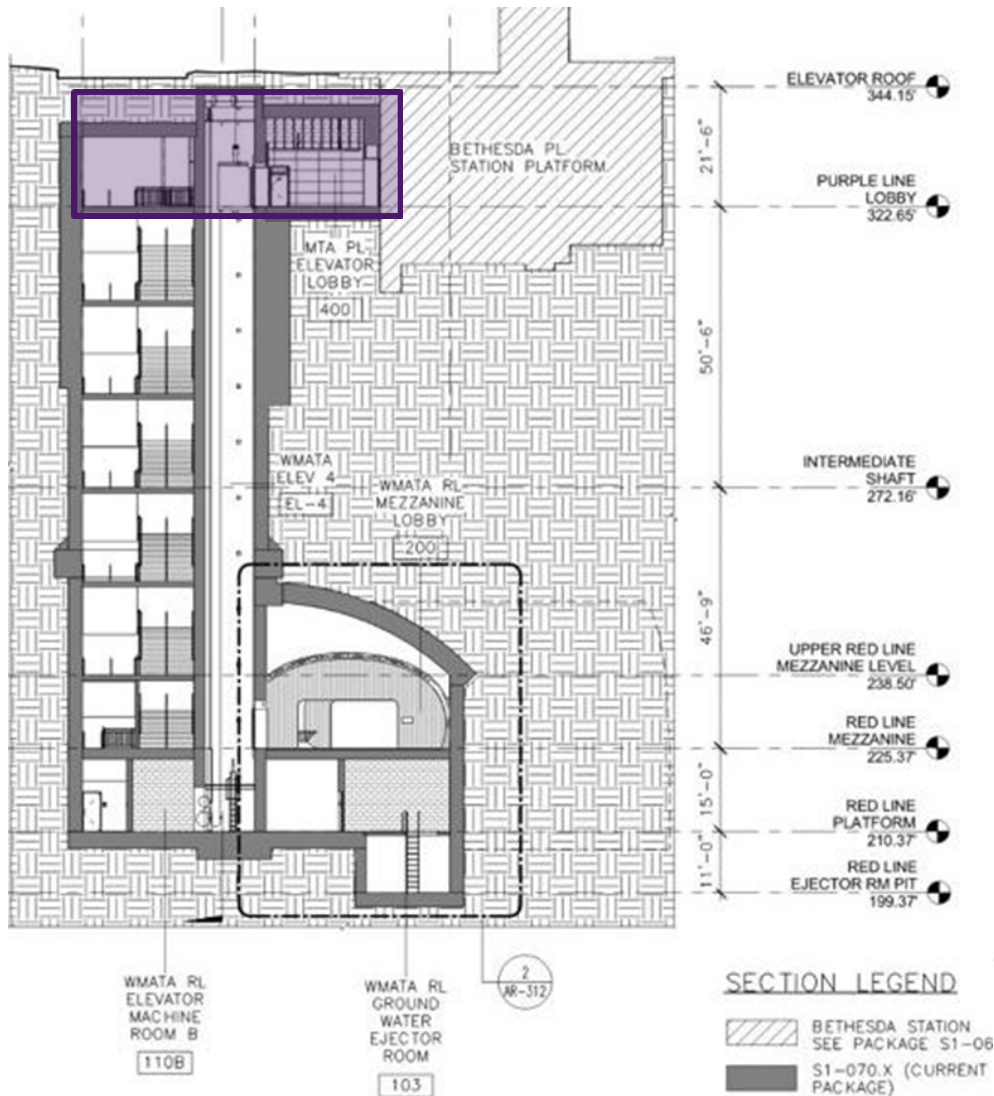
Upcoming Work:

- Continue placement of concrete for the cavern floors and walls.
- Begin construction of elevator and stairs from cavern to lobby.

BETHESDA LOBBY



Purple
Line



Upcoming Work:

- Remove the western portion of the Elm Street shed.
- Begin excavation for the lobby at street level.
- Begin concrete work for the lobby.

BETHESDA STATION



*Purple
Line*

Recent and Ongoing Work:

- Completed stair, escalator structures, elevators, elevator machinery, and track installation.
- Continued mechanical and electrical systems installation.
- Continued retaining walls at Woodmont Plaza.
- Began construction on elevator headhouse.

Upcoming Work:

- Complete station elements.
- Complete mechanical systems installation.
- Complete permanent power installation and start-up.
- Complete construction of head house.
- Complete track and Overhead Catenary System (OCS) wiring.



BETHESDA ENCLOSED TRAINWAY



*Purple
Line*



Recent and Ongoing Work:

- Completed concrete track slabs.
- Continued track installation.

Upcoming Work:

- Complete track installation.
- Complete Wisconsin Avenue gas main adjustments.
- Install lighting and fire suppression elements.
- Install railings and gates.

ELM STREET PEDESTRIAN BRIDGE



*Purple
Line*



Recent and Ongoing Work:

- Installed fencing.
- Installed lighting.
- Continued asphalt paving of the Capital Crescent Trail.

Upcoming Work:

- Installation of remaining track and Overhead Catenary System (OCS) poles.

PEARL STREET TO CONNECTICUT AVENUE



*Purple
Line*



Recent and Ongoing Work:

- Completed track installation at Connecticut Avenue and Bethesda Enclosed Trainway (BET).
- Continued CCT construction.
- Continued trail connections at East-West Highway, Kentbury Way, and Landmark Court.
- Complete retaining wall fencing.

Upcoming Work:

- Complete CCT construction.
- Complete trail connections at East-West Highway, Kentbury Way, and Landmark Court.
- Installation of the OCS poles and wiring.

CONNECTICUT AVENUE STATION



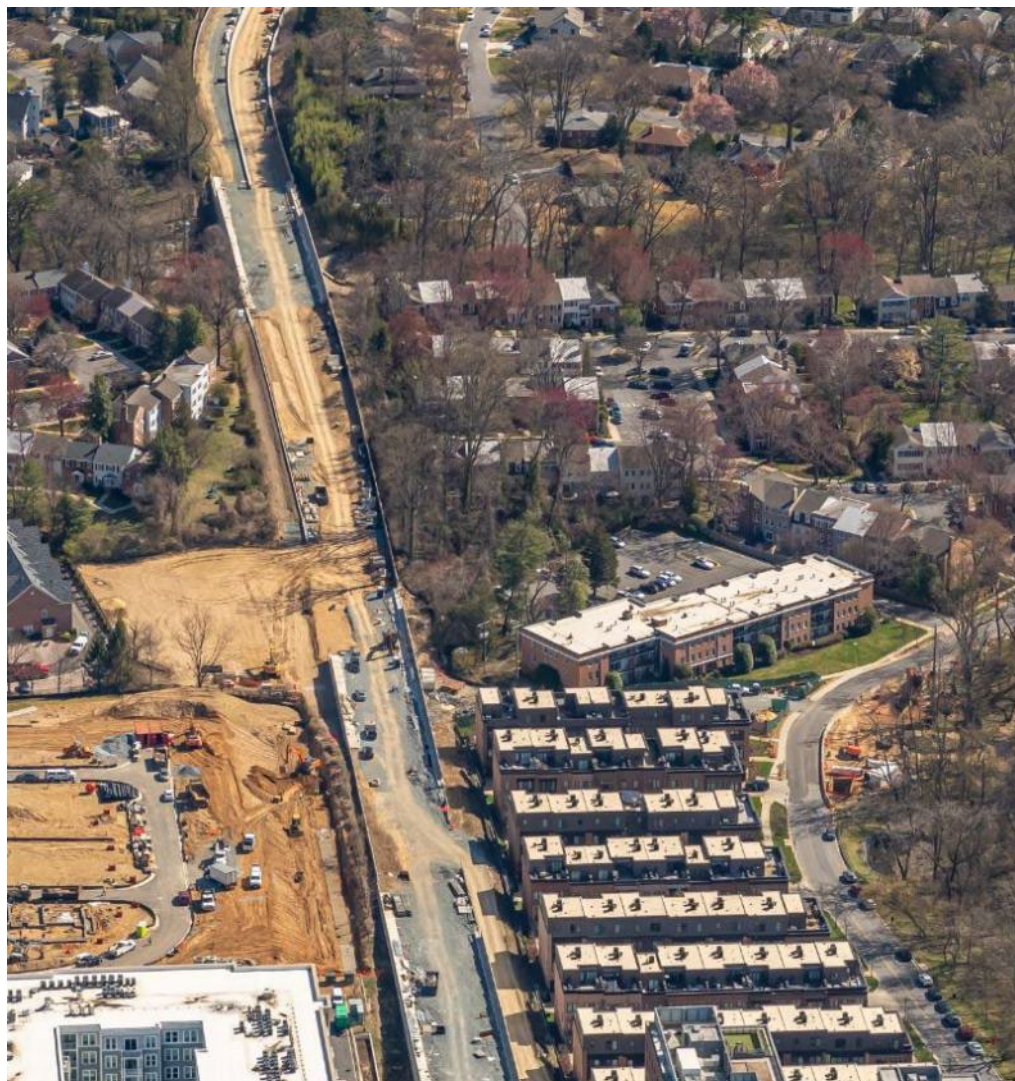
Recent and Ongoing Work:

- Completed station power installation and water and sewer services.
- Completed elevator installation and pre-cast stair structures.
- Continued station construction.
- Placed concrete on CCT bridge over Connecticut Avenue.

Upcoming Work:

- Install fencing on the CCT bridge over Connecticut Avenue.
- Complete CCT connections to station and local developments.
- Install OCS poles and tracks through station.

CHEVY CHASE LAKE



Recent and Ongoing Work:

- Completed storm drain south of Chevy Chase Lake Drive.
- Completed 54" water main.
- Completed water, sewer and storm drain relocations.
- Completed phase 2 Maintenance of Traffic (MOT) switch.
- Began installation of box culvert.

Upcoming Work:

- Complete installation of box culvert.
- Restoration of Chevy Chase Lake Drive.

JONES MILL ROAD



*Purple
Line*

Recent and Ongoing Work:

- Completed excavation for phase 2 bridge construction.
- Began foundations for pre-cast concrete arch.

Upcoming Work:

- Install concrete arches.
- Continue utility relocations.
- Restore Jones Mill Road.
- Complete Jones Mill Road CCT access.

JONES MILL ROAD TEMPORARY CLOSURE



On or about November 2, through November 16, 2025:

- Jones Mill Road will close between Jones Bridge Road and Coquelin Terrace. This closure is necessary for crews to complete utility relocations and construction of the Purple Line underpass. Pedestrian access through the work zone is maintained. Please follow on-site signage.
- Please note that weather and unforeseen conditions may impact work schedules.

ROCK CREEK PARK



*Purple
Line*

Recent and Ongoing Work:

- Completed CCT underpass and retaining walls.
- Installed CCT bridge concrete.
- Began trail connections from CCT to Rock Creek Trail system.

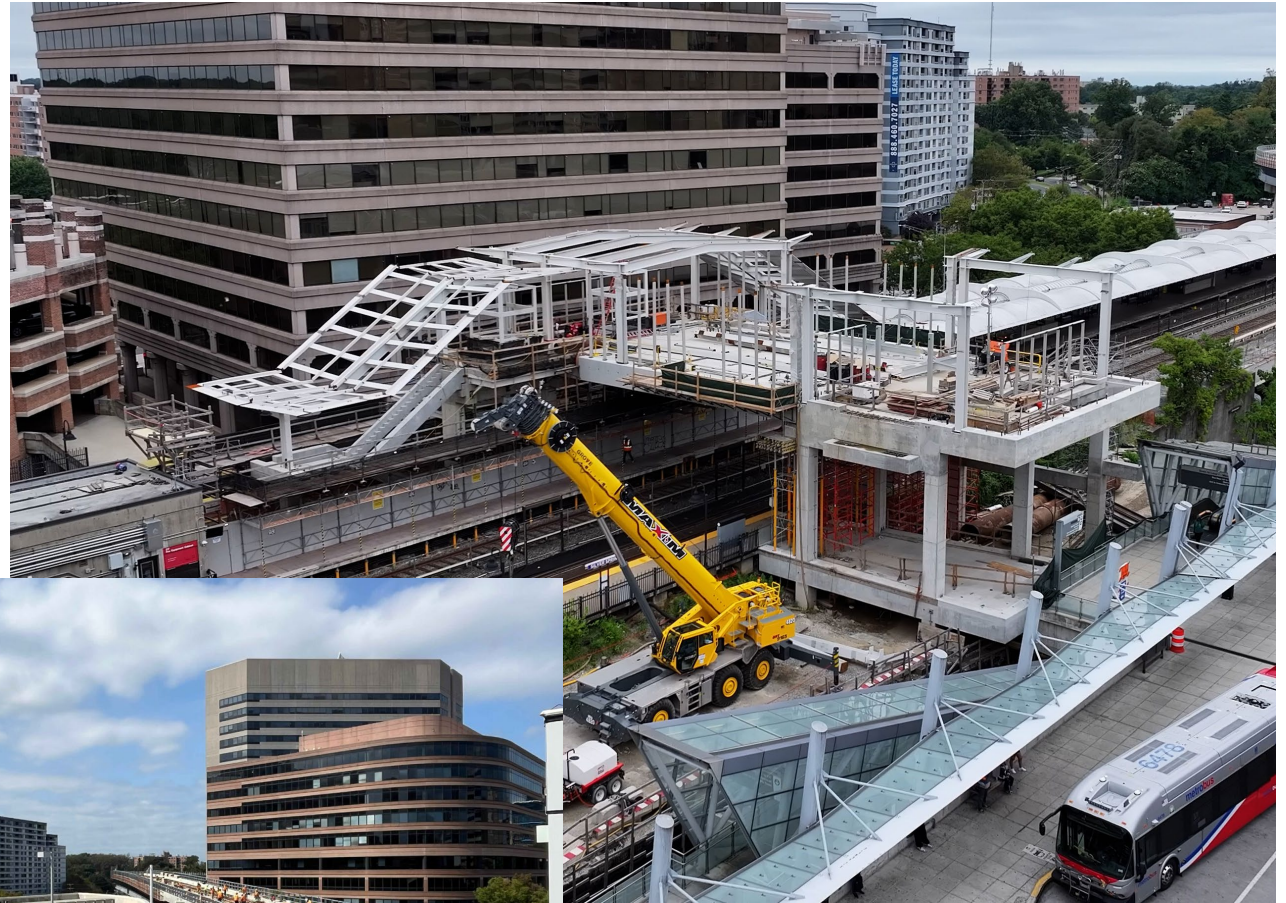
Upcoming Work:

- Complete trail asphalt paving connection from CCT to Rock Creek Trail system.
- Complete CCT asphalt paving, grass swales, fencing and lighting.
- Complete Rock Creek CCT bridge railings.
- Complete fencing along alignment.

SILVER SPRING TRANSIT CENTER AND STATION



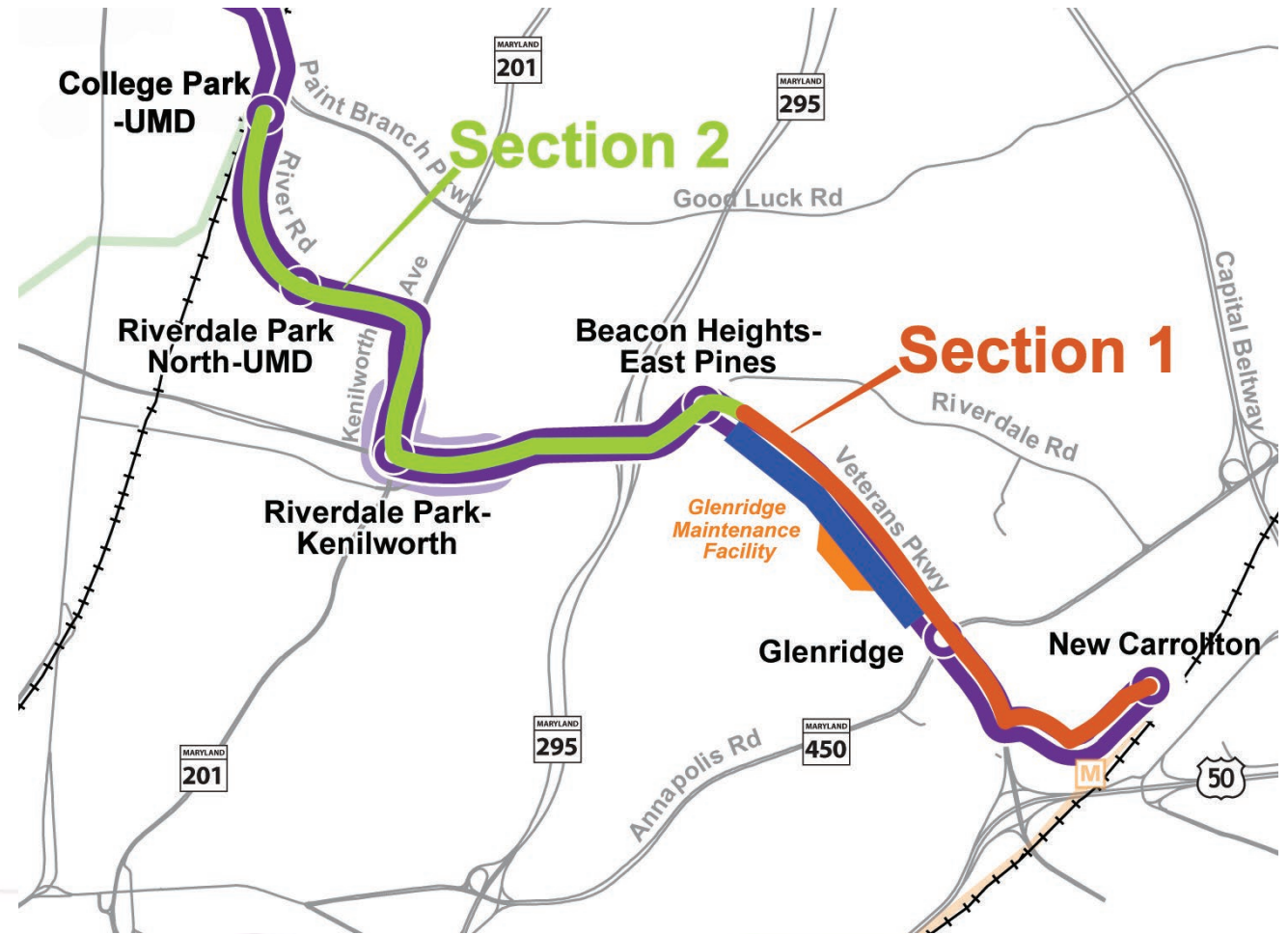
- Continued coordination with WMATA Mezzanine Project to connect to the Red Line.
- Completed track installation.
- Continue station element work.



LRV TEST SECTIONS



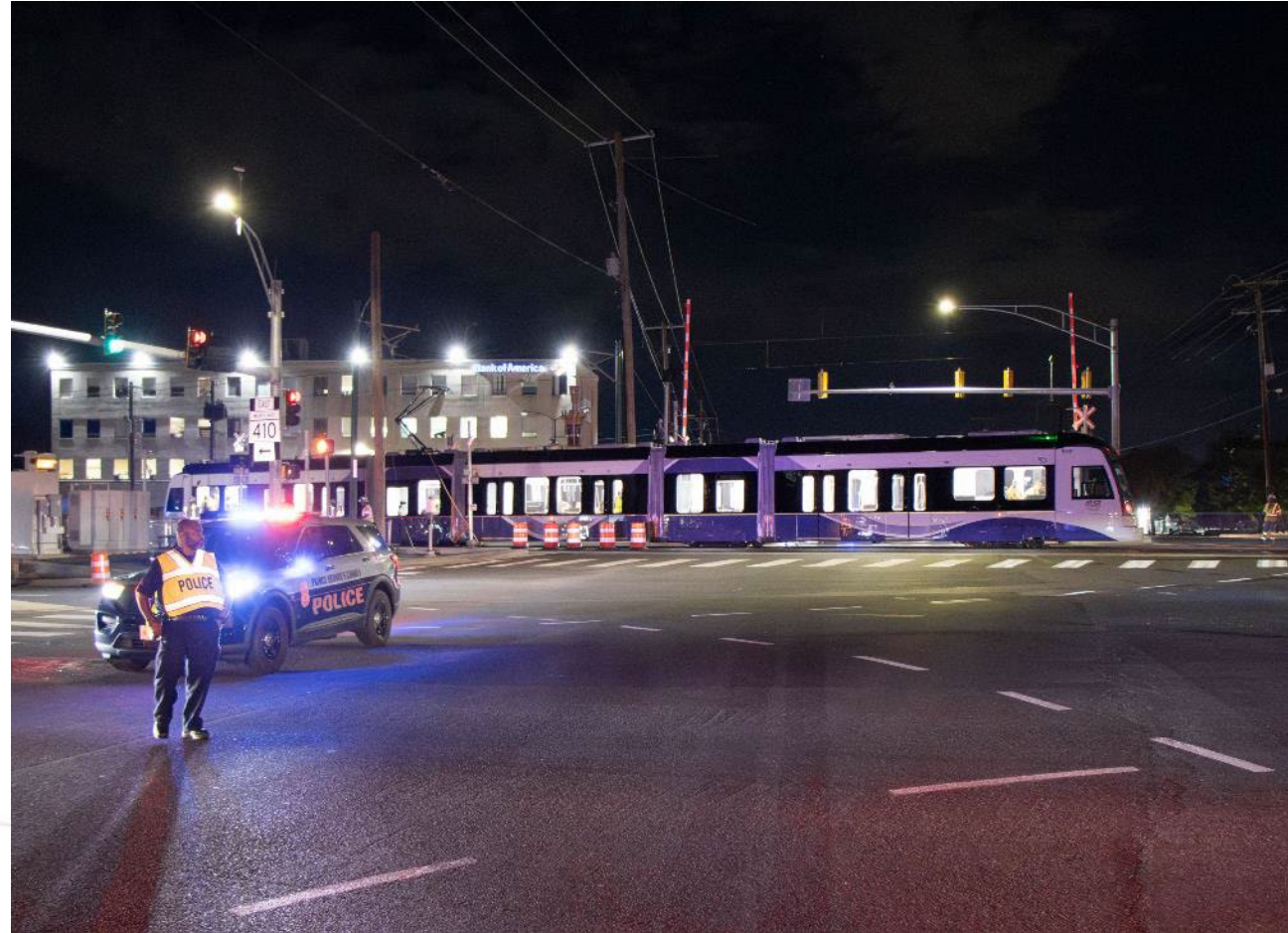
- Test sections are determined by the locations of track interlockings and OCS wires.
- Testing is ongoing in Section 1 and anticipated to begin in Section 2 in the coming months.
- While testing is not taking place in your neighborhood yet, you can expect to hear more soon about our Outreach efforts before testing begins near you.



WHAT TO EXPECT: MAINTENANCE OF TRAFFIC (MOT) DURING TESTING



- Until the traffic control systems are operational, MOT crews will control the intersections in the test area. This will include police, flaggers, intermittent traffic stops and road closings.
- A specific MOT protocol is developed for each test section.
- Hours of testing are weekdays from 9 p.m. to 5 a.m. through the end of 2025.
- The public should consider the section live and expect to see the LRVs periodically during the testing period.



WHAT TO EXPECT: TESTING OUTREACH

- Coordination with State Highway Administration and other parties.
- Advanced communications to elected officials.
- On-site notifications – Variable message signs.
- In-person outreach to schools, local businesses and impacted communities.
- Send public notifications to outreach lists.
- Post updates on Purplelinemd.com.
- Safety-focused social media campaign.

Follow the latest at purplelinemd.com





¿VES VÍAS?
¡PIENSA EN
PURPLE LINE!

CONSTRUYENDO EL FUTURO DE MARYLAND CONECTANDO A LAS COMUNIDADES

PRUEBAS DINÁMICAS AMPLIADAS DE LOS VEHÍCULOS DEL TREN LIGERO DE LA PURPLE LINE

Qué: Pruebas operativas de vehículos ferroviarios ligeros (LRV) en las carreteras y adyacentes a ellas. Los vehículos ligeros solo se moverán a través de intersecciones cerradas brevemente por oficiales de policía o equipos de señalización dedicados.

Cuándo: A partir del 28 de julio, todas las noches, entre las 9:00 p.m. y las 5:00 a.m.

Dónde: Los vehículos de tren ligero (LRV) operarán en el extremo este de aproximadamente 1.5 millas de la alineación. Las pruebas están planeadas desde el Centro de Operaciones y Mantenimiento (OMF) en Veterans Parkway, a través de Annapolis Road, continuando a lo largo de Veterans Parkway, y en Ellin Road hacia New Carrollton.



QUE ESPERAR

- LRVs no operará con tráfico vehicular durante esta fase de pruebas.
- El tráfico será detenido y retenido por oficiales de policía o equipos de señalización hasta que los LRV despejen las intersecciones brevemente cerradas.
- Los LRV acelerarán y frenarán en la pista a diferentes velocidades.
- Los trenes circulan silenciosamente, produciendo aproximadamente el mismo ruido que los automóviles y camiones. Espere pruebas periódicas de bocinas y campanas.
- Las pruebas se realizarán entre las 9:00 p.m. y las 5:00 a.m.
- Se prevén retrasos menores en el tráfico ya que el tráfico es más ligero entre las 9:00 p.m. y las 5:00 a.m.
- Operadores completamente capacitados y certificados operarán los LRV.
- Carteles de mensajes electrónicos instalados antes de la prueba y que permanecerán durante la duración de prueba.

DYNAMIC TESTING SAFETY TIPS

- Avoid distractions and focus on driving safely around the work zone.
- Reduce speed and be mindful of flaggers and police.
- Obey traffic signs and signals.
- Pedestrians and micromobility users should always use crosswalks and obey signage when crossing roads and track.
- Consider all LRV high-voltage overhead power wires energized and dangerous.



COMMUNITY, SCHOOL OR BUSINESS QUESTIONS OR CONCERNS?

PLEASE CONTACT
Outreach@purplelinemd.com
443-451-3706 • 443-451-3705 (Español)

MEDIA CONTACT
Media@purplelinemd.com

Purple Line is Powered Up!

Follow us
@purplelinemd



purplelinemd.com

TESTING SAFETY



During and after testing, the public should consider all track and OCS wire live and expect to see the LRVs periodically, day or night.

Some safety reminders:

- Obey traffic signals.
- Look for the LRVs when crossing tracks.
- Use approved crosswalks only.
- Do not walk near or on the tracks.
- Do not stop or park on the tracks.

Overhead Catenary System (OCS) Wires

- Wires carry 1500 Volts DC. Assume all OCS wires are live and carrying extremely dangerous electric current at all times.



COMMUNITY OUTREACH



- The Outreach Team attended **18 events this year**, 9 more than last year.
- Recent 2025 events include:
 - Bethesda Arts Festival.
 - Sligo Creek Elementary School Back-to-School night.
 - National Night Out in Silver Spring.
 - Long Branch Festival.
 - Rhode Island Avenue Trolley Trail Day.
 - Crossroads Farmers Market.
 - Career Day at New Hampshire Estates Elementary School.
 - UMD Maryland Day.
- Planning underway with partners for 2026 opportunities to **increase community engagement** and awareness!



Visit purplelinemd.com to see our full events calendar!

BIKE AND SCOOTER SAFETY CAMPAIGN



When crossing Purple Line tracks:

- Use crosswalks.
- Cross at a right angle, perpendicular to the tracks.
- Do not ride parallel in the trackway – tires will get caught.
- Use extra caution when wet or frozen – rail can be slippery.



Be Particular, Ride Perpendicular!



CAT MEMBER ENGAGEMENT



- Based on feedback, CAT members were contacted early 2025 about continued service and engagement ideas.
- Outreach makes monthly individualized phone calls to CAT members and will soon reintroduce CAT member listening sessions.
- Broadened distribution efforts of the CAT schedule to include community centers, libraries, and coffee shops.
- Implemented feedback from the post-CAT meeting surveys. Please expect a post-CAT meeting survey in the coming weeks!



Interested in being a Purple Line CAT Member? Contact our Outreach team at Outreach@purplelinemd.com

COMMUNITY GRANTS



Purple Line Transit Partners awarded
28 Beyond the Rails Grants since
September 2023 debut and 9 in January 2025.

- **More than \$81,000** awarded to date.
- 2025 recipients include:
 - New Hampshire Estates Elementary School
 - Oak View Elementary School Parent Teacher Association
 - African Communities, Inc.
 - Silver Spring United Methodist Church
 - Rolling Terrace Elementary School Parent Teacher Association
 - Crossroads Community Food Network
 - Silgo Creek Elementary School Parent Teacher Association
 - Safe Kids Worldwide
- Deadline for next grant applications: November 30, 2025.



BUSINESS ENGAGEMENT



- MDOT Purple Line **Small Business Grant Program** has awarded \$1.5 million in 2025 to more than 140 businesses. **Online applications** reopen on October 6, and are due by **November 7, 2025**.
- Business Engagement regularly engages business owners and staff to relay important construction information and mitigate impacts.
- Over the summer, more than 850 connections were made with Montgomery County small businesses, including in-person, advance notifications and follow-up phone calls.

CentroNia
Educating children and strengthening families in a bilingual multicultural environment

Early Childhood Education
Full-day education & care for children from birth through age five that lays the foundation for school readiness

Family & Community Engagement
Parent workshops, engagement activities, and relief and referral services that improve the wellbeing of children and families

Food & Wellness
Preparing fresh, nutritious meals for students and educating children, parents, and community members on leading healthy lifestyles

Volunteer
Volunteer members make a difference

Purple Line **MDOT**
Maryland Department of Transportation

Small Business Grant Program

Learn more about eligibility, deadlines, and download the application at purplelinemd.com

The Purple Line Small Business Grant Program is operated by the Maryland Department of Transportation (MDOT) to provide support to small businesses located along the Purple Line corridor that are impacted by construction.

Benefits
Direct grants up to \$50,000, payable to eligible small businesses, are intended to offset the impact that construction closures or detours may have on business operations and may be used to pay any business expenses.

Eligibility
To be eligible for a grant, a small business must serve customers onsite at a location within one-quarter mile of the Purple Line tracks, be open and operational at that location since July 1, 2023, be in good standing with the Maryland State Department of Assessments and Taxation and be current on federal and state taxes.

PurpleLineBusinessGrants@mdot.maryland.gov

Thank you!

Register for Construction Updates:
purplelinemd.com

Email Us:
outreach@purplelinemd.com | media@purplelinemd.com
business@purplelinemd.com

Call Us:
443-451-3706 / 443-451-3705 (Español)

Follow Us:
[@purplelinemd](https://twitter.com/purplelinemd)



Questions?