



North Bethesda BRT Planning Study

North Bethesda TMD

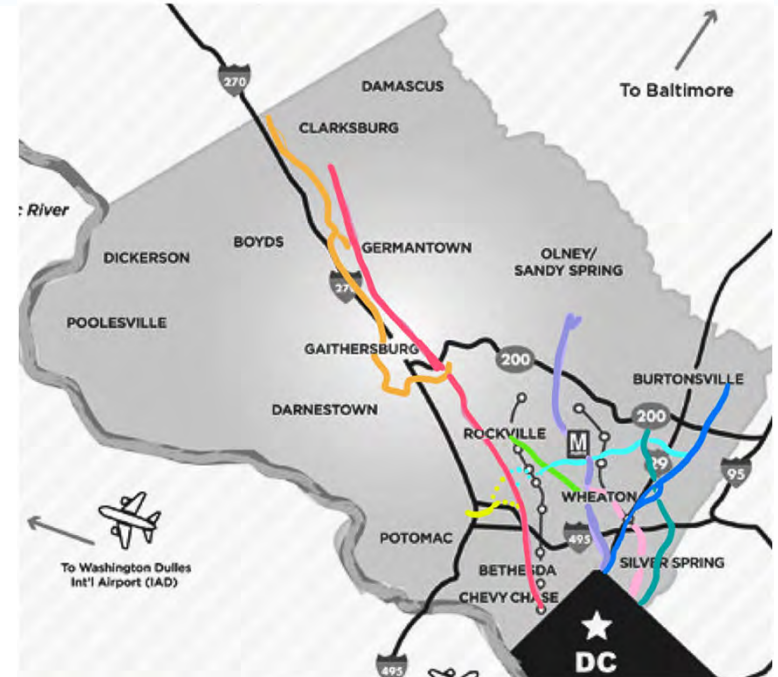
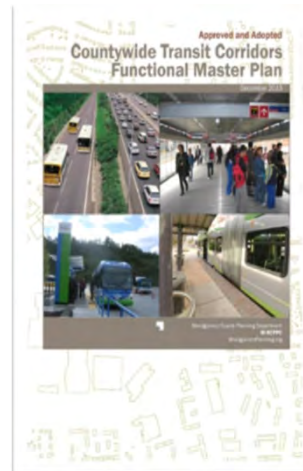
January 19, 2022

Bus Rapid Transit Overview

- What is BRT and Flash BRT
- BRT in Montgomery County
- Active Flash BRT Projects



FLASH Station



What is Bus Rapid Transit (BRT)?

Bus-based rapid transit system with additional features to improve reliability and capacity:

- Dedicated lanes where feasible
- Frequent and reliable all-day service
- Off-board fare collection
- Level boarding through all-doors
- Intersection improvements
- Enhanced stations with real-time transit information



Flash Bus Rapid Transit (BRT)

- Large, branded vehicles with WiFi and USB ports
- Unique station design, pre-payment stations, real-time transit information
- No steps on/off buses
- Wheelchairs, bikes, and strollers on board



FLASH
BUS RAPID TRANSIT IN MONTGOMERY COUNTY

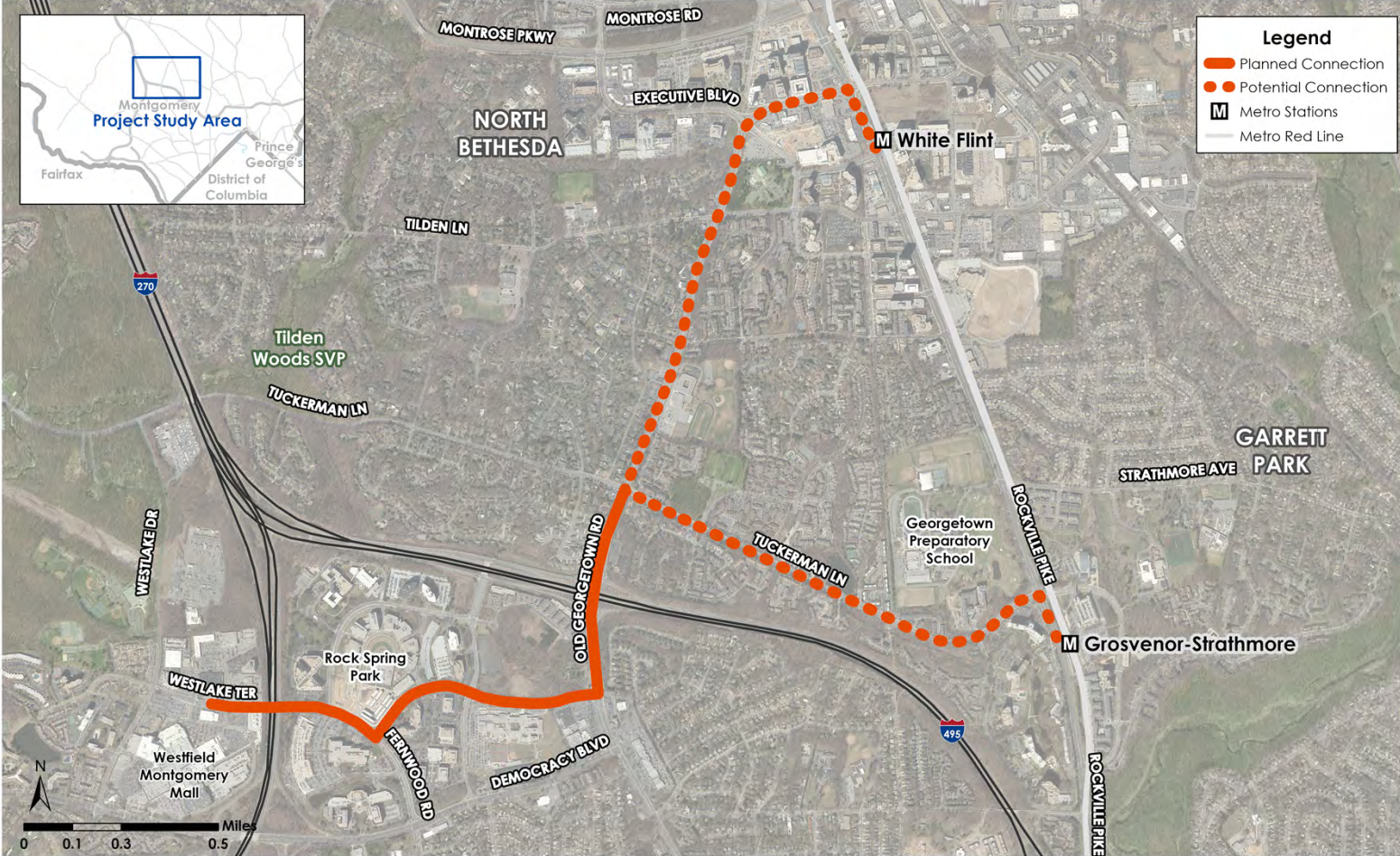


MCDOT
Montgomery County
Department of Transportation

North Bethesda Transitway Corridor

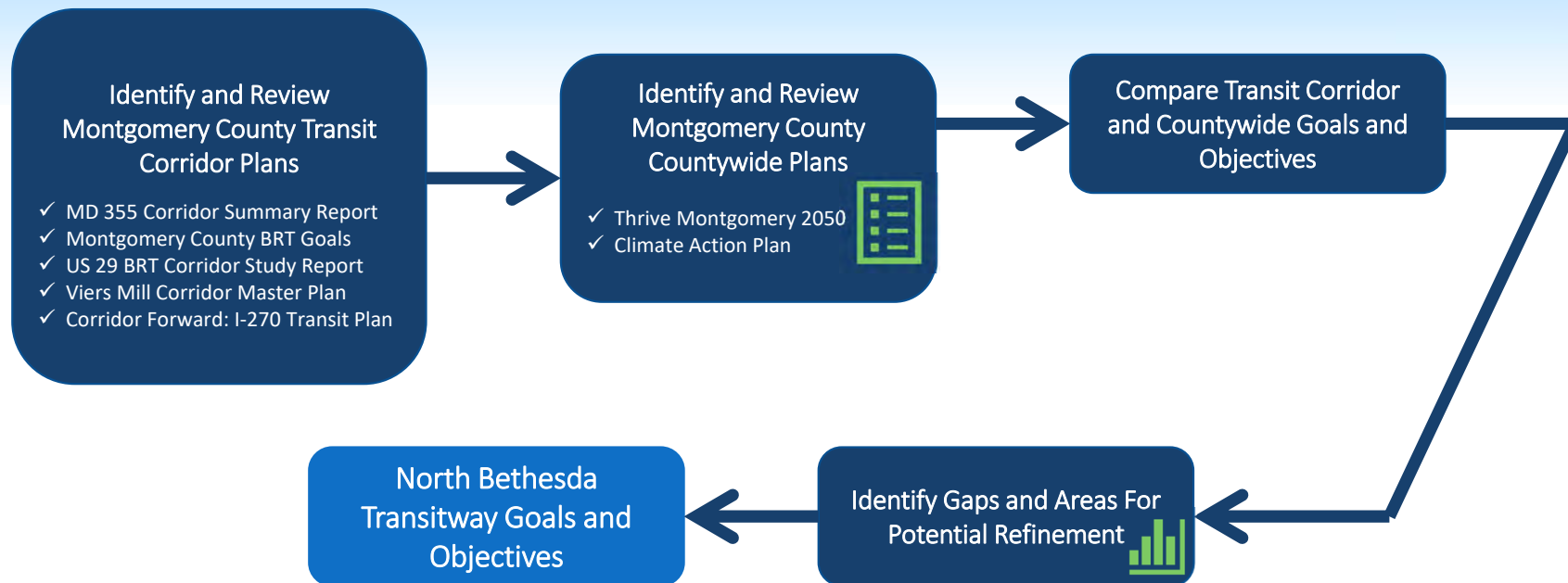
FLASH

FLASH
BUS RAPID TRANSIT IN MONTGOMERY COUNTY



MCDOT
Montgomery County
Department of Transportation

Goals and Objectives Development

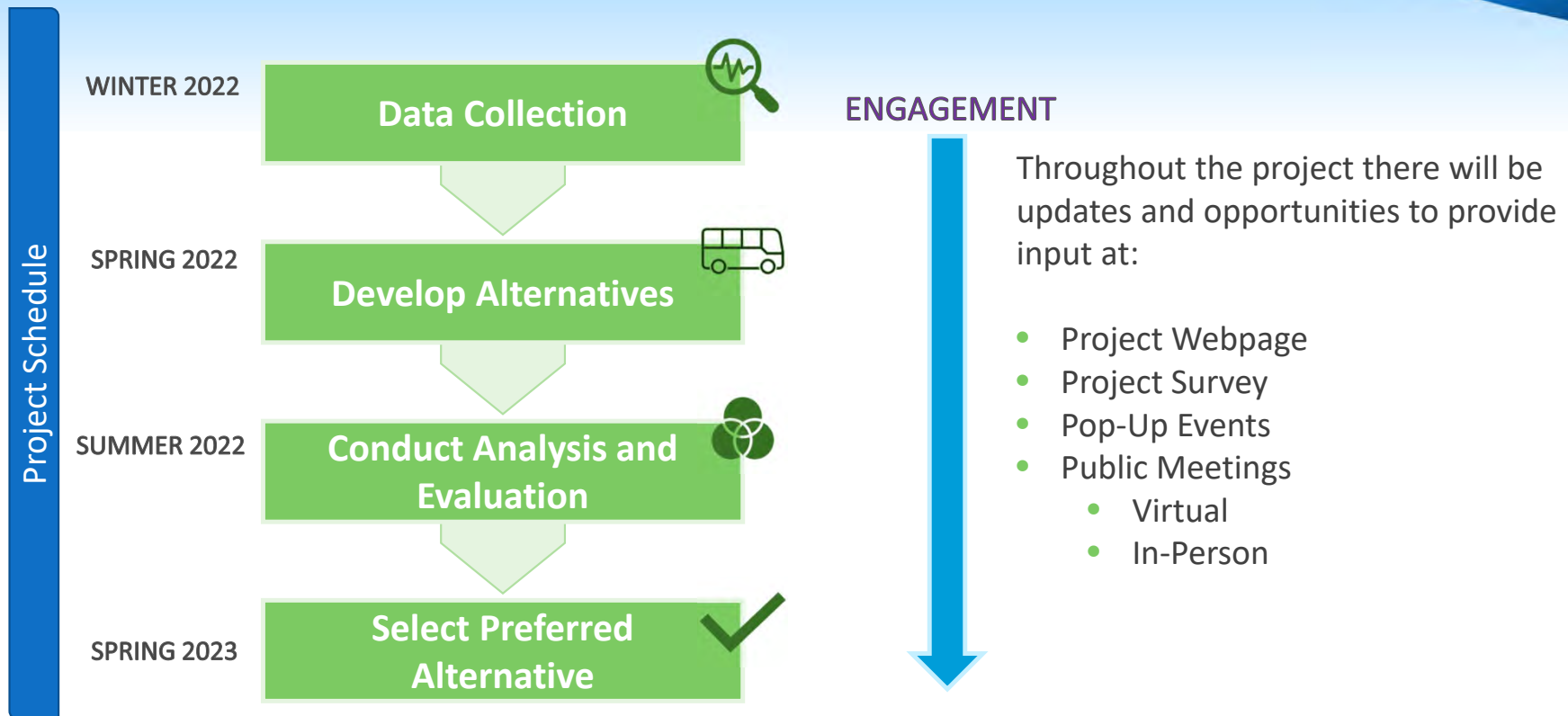


Data Collection

Category	Data Item*
Demographics	Activity Centers and Population Density
	Racial Demographics
	Transit/Commuter Propensity
Employment, Destinations, and Travel Behavior	Top Employment Sectors
	Travel Inflow and Outflow
	Destination/Origin Locations
Land Use Plans and Planned Development	Land Use Plans and Planned Development
Mobility Trends and Conditions	Street Network and Available ROW
	Bike/Ped Infrastructure
	Transit Travel Time

*Data collection may be impacted due to ongoing Covid-19 pandemic

Project Process and Schedule




Community & Stakeholder Engagement


- Establish the Corridor Advisory Committee (CAC)
 - Applications available now on the project page:
 - [North Bethesda Transitway \(montgomerycountymd.gov\)](http://montgomerycountymd.gov)

North Bethesda Bus Rapid Transit

This planning study will determine the configuration, stations and termini of the North Bethesda BRT.


 Transit Project

Project Manager:
Sandra Marks
Capital Projects Manager
Transportation Planning and Design
Sandra.marks@montgomerycountymd.gov



DESCRIPTION	STATUS	GET INVOLVED	FUNDING
<h3 style="margin-top: 0;">Project Description</h3> <p>The North Bethesda Bus Rapid Transit (BRT) corridor was identified in the 2013 Countywide Transit Corridors Functional Master Plan.</p> <p>The 1992 North Bethesda/Garrett Park Master Plan first recommended the creation of a high capacity and high-quality transit connection from the Westfield Montgomery Mall Transit Center through the Rock Spring office park to the Metrorail Red Line. At its eastern end, the BRT would terminate at the either the Grosvenor or White Flint Metrorail Station. At its western end, it would terminate at the transit center at Montgomery Mall.</p> <p>This planning study will refine the Master Plan recommendation and determine station locations, BRT configuration and corridor termini.</p> <p>Learn about other BRT projects</p> <ul style="list-style-type: none"> • MD 355 BRT • Veirs Mill Road BRT • New Hampshire Ave BRT • US 29 (In Service) <p>This planning study will refine the Master Plan recommendation and determine station locations, BRT configuration and corridor termini.</p>			

Project Map





Community & Stakeholder Engagement

- Public & Stakeholder Meetings
 - Public Meetings (in-person and virtual)
 - Corridor Advisory Committee Meetings
 - Stakeholder Meetings
- Project Survey
- Pop-Up Events
- Bus Stop Chats





Questions?

Sandra Marks – BRT Project Manager, MCDOT

Sandra.marks@montgomerycountymd.gov