



# MONTGOMERY COUNTY'S **PED**ESTRIAN PLAN



**North Bethesda  
Transportation  
Management District  
February 19, 2020**

**Eli Glazier**

[eli.glazier@montgomeryplanning.org](mailto:eli.glazier@montgomeryplanning.org)

# Agenda

- 1) What is the Pedestrian Plan?
- 2) Why Now?
- 3) Happening Now
- 4) What's Next?
- 5) Getting Involved



# 1) What is the Pedestrian Plan?

The county's first Pedestrian Master Plan will make walking and rolling safer, more comfortable, more convenient and more accessible for pedestrians of all ages and abilities in all parts of the county.

All trips within a short distance should be realistic pedestrian trips.

A photograph of a residential street scene. In the foreground, a concrete sidewalk runs from the bottom center towards the middle ground, flanked by green grass. To the left, a large tree trunk is visible. In the background, several cars are parked along the street, and a two-story house with light-colored siding is partially visible on the right. The scene is brightly lit, suggesting a sunny day.

## **1) What is the Pedestrian Plan?**

**This is not just a plan for  
sidewalks.**

# 1) What is the Pedestrian Plan?



**MCDOT**

Montgomery County DEPARTMENT OF GENERAL SERVICES

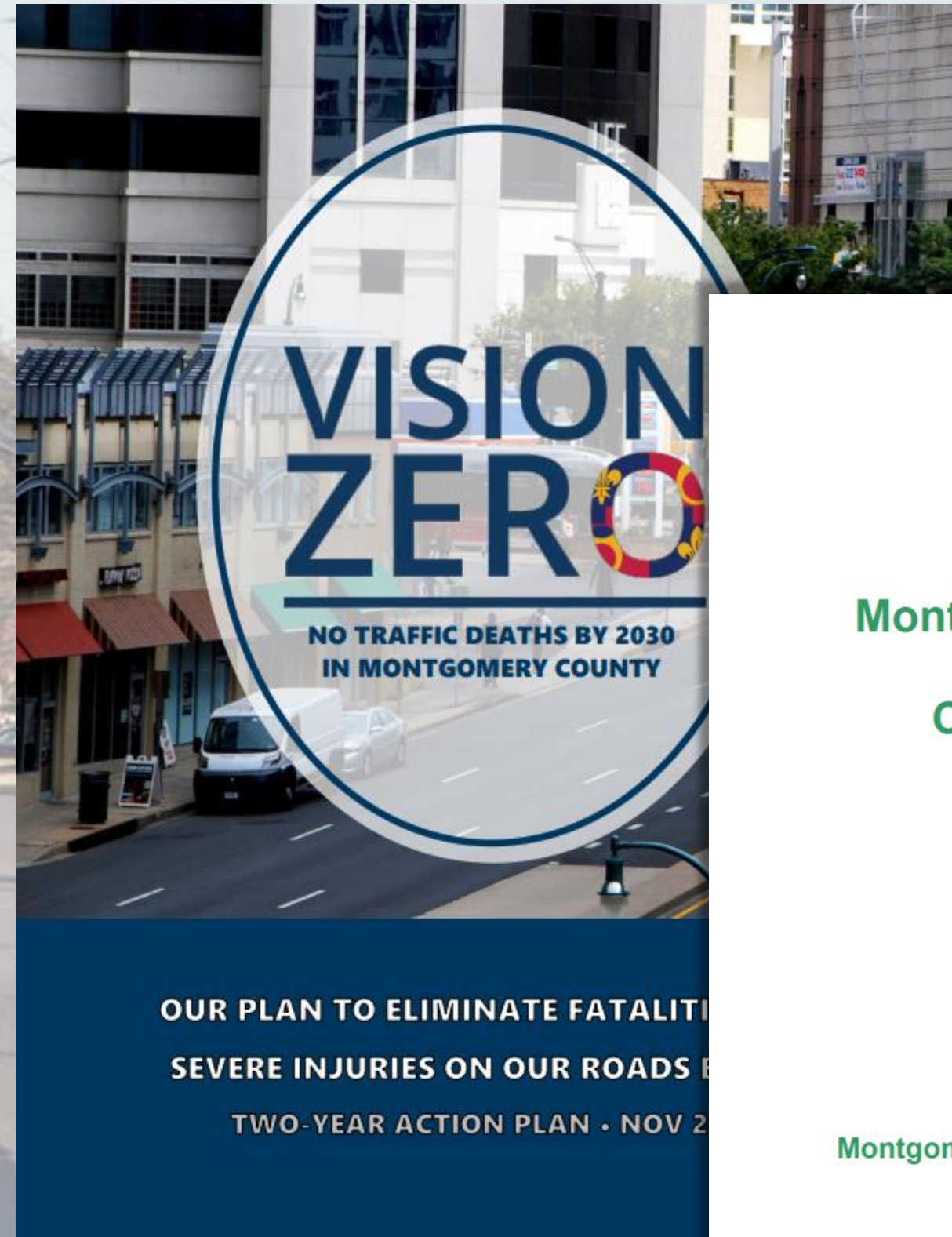
**DGS**

*Delivering Great Service!*

**Montgomery Planning**



## 2) Why Now?



### Montgomery County, Maryland Climate Protection Plan

Prepared by the  
Montgomery County Sustainability Working Group

January 2009



## 2) Why Now?



**The county has never planned for pedestrians and it shows.**

## 2) Why Now?



**Pete Piringer**

@mcfrsPIO

Update - Viers Mill Rd & Newport Mill Rd, @MCFRS\_EMIHS evaluating minor NLT injury, apparently pedestrian struck by side mirror of passing vehicle



**Pete Piringer** @mcfrsPIO · 3h

Viers Mill Road and Newport Mill Road, pedestrian struck

7:08 AM · Feb 11, 2020 · [Twitter for iPhone](#)

2 Retweets 4 Likes



The county has never planned for pedestrians and it shows.



## 2) Why Now?



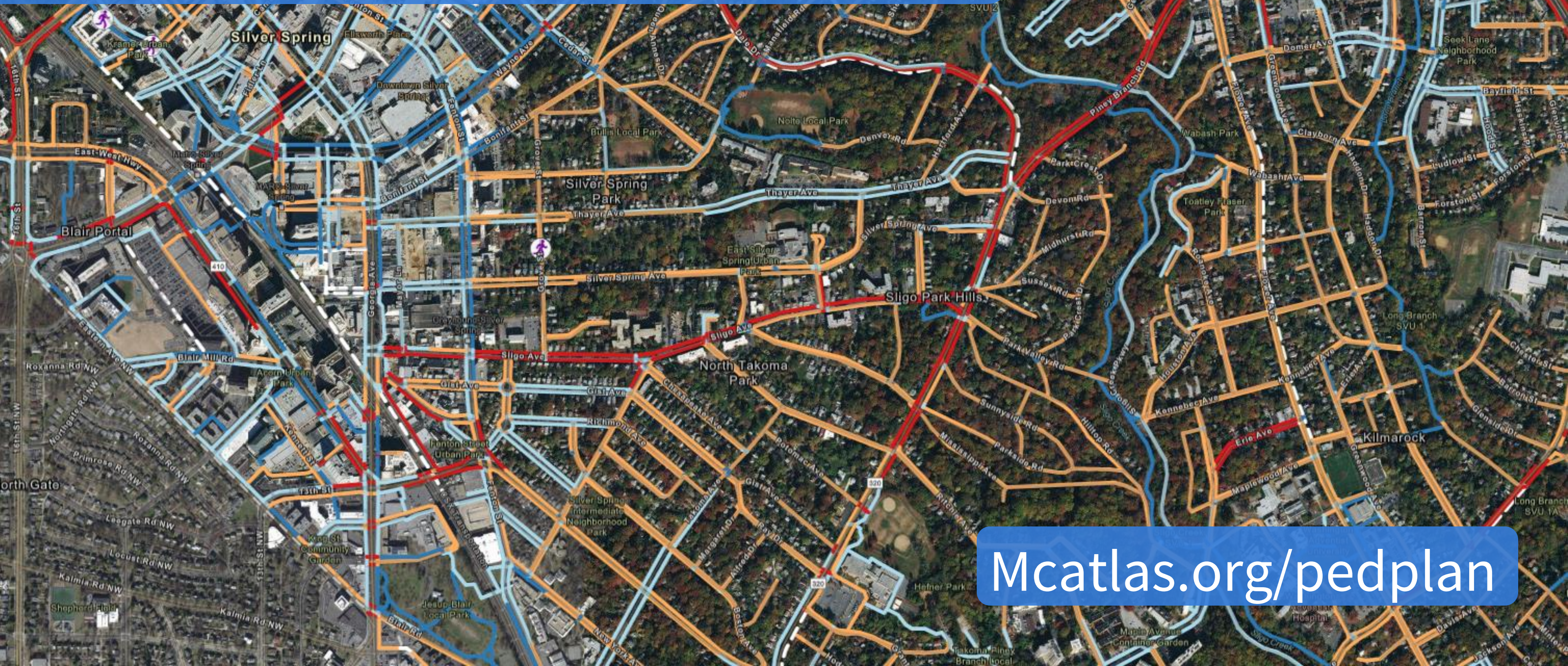
**We have a lot of pedestrians here.**

### 3) Happening Now

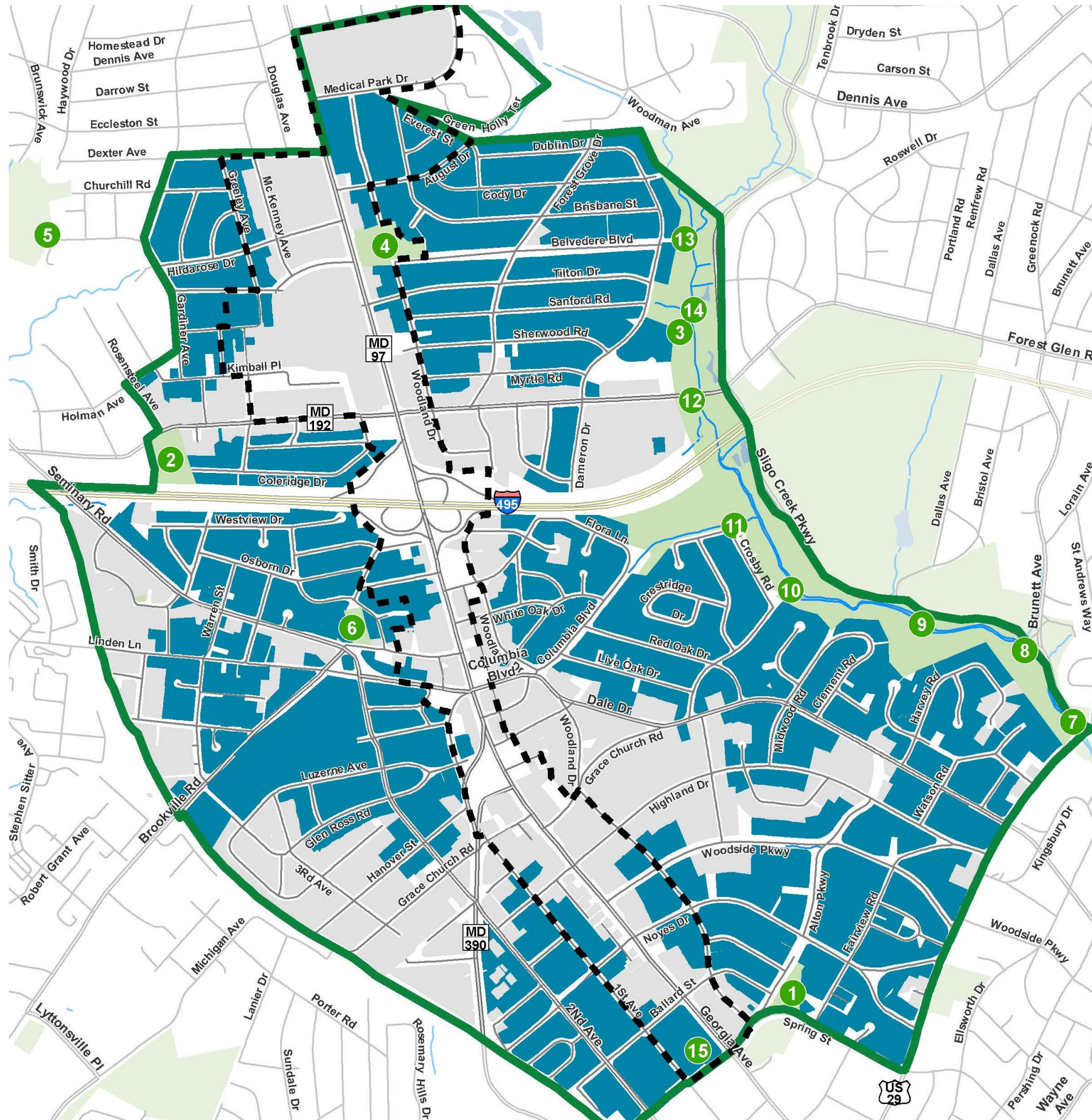


**We're painting a picture of the pedestrian environment.**

# Pedestrian Level of Comfort

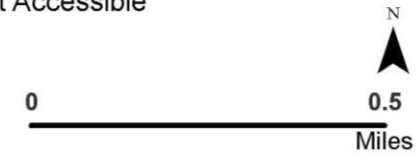


[Mcatlas.org/pedplan](https://Mcatlas.org/pedplan)

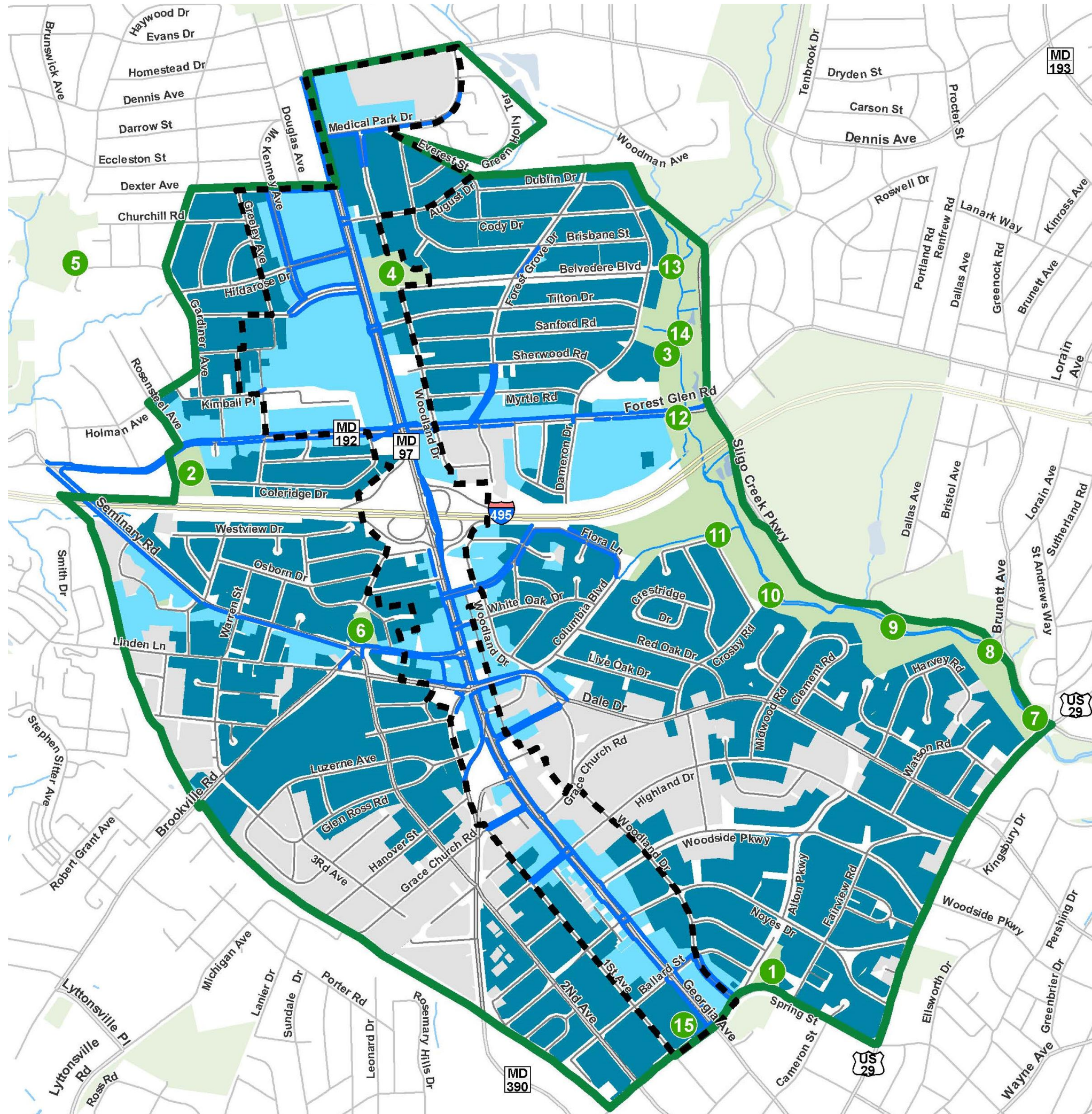


### 1/2 Mile Pedestrian Access to Nearby Parks

- Park Access Points
- Master Plan Boundary
- Study Area Boundary
- Longterm Improvements
- Existing Comfortable Walkshed
- Longterm Comfortable Walkshed
- Not Accessible

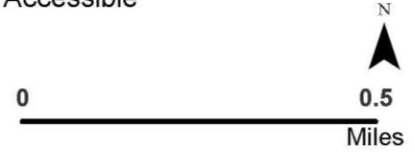


**Forest Glen/Montgomery Hills  
Existing Park Access**

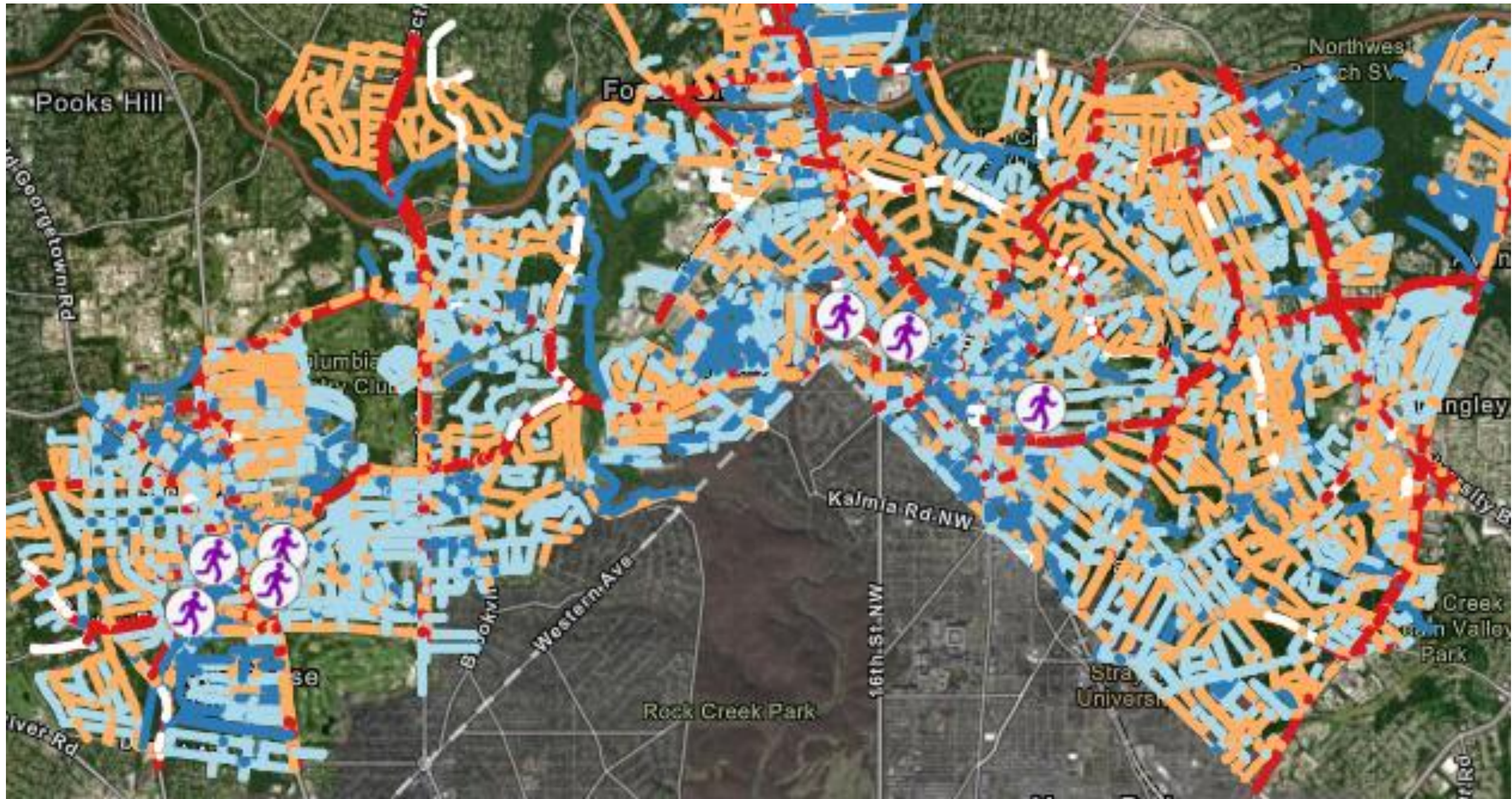


### 1/2 Mile Pedestrian Access to Nearby Parks

- Park Access Points
- Master Plan Boundary
- Study Area Boundary
- Longterm Improvements
- Existing Comfortable Walkshed
- Longterm Comfortable Walkshed
- Not Accessible



**Forest Glen/Montgomery Hills  
Improved Park Access**



## Purple Line Pedestrian Access Analysis

### 3) Happening Now

- Pedestrian Level of Comfort
- Predictive Safety Analysis
- Countywide Survey
- Student Travel Tally
- White Flint Walkability Work



## 4) What's Next?

- Prioritizing New/Improved Pathways and Crossings
- Recommendations
  - Pedestrian-forward design
  - Policy
  - Programming





# Prioritizing New/Improved Pathways and Crossings

- What pedestrian pathways and crossings are the most important to construct or improve?
- What factors should guide prioritization?



# Pedestrian-Forward Design Recommendations

- Develop design and traffic operations approaches that support pedestrians related to:
  - Traffic-calming
  - Accessibility
  - Signal timing
  - Materials selection
  - Others



# Policy Recommendations

- Work closely with County agencies to identify existing regulations/policies that affect pedestrians
- Recommend and adopt new/improved policies



# Programming Recommendations

- Catalog existing pedestrian programming
- Recommend new programming, potentially including:
  - Traffic safety
  - Wayfinding
  - ADA compliance for businesses



## 5) Getting Involved



# Website/ E-letter

- Sign up for e-letter to stay informed about upcoming events/milestones.
- Send comments & concerns through the website.

## Pedestrian Master Plan

Planning > Transportation > Pedestrian Planning > Pedestrian Master Plan



October 2019

THE MARYLAND-NATIONAL CAPITAL PARK AND PLANNING COMMISSION

### MONTGOMERY COUNTY'S PEDESTRIAN PLAN

The Montgomery County Planning Department is currently reviewing pedestrian conditions countywide. This plan will be comprehensive. In...

Hello Pedestrians!

Our project kickoff meetings are just around the corner.

These meetings will be great opportunities to learn more about the plan and to provide important input on issues that planners should research and make recommendations about. Your comments and suggestions will help make the plan better and Montgomery County a more pedestrian-friendly place.

As a reminder, meeting dates and locations are below. You do not need to RSVP, but it is encouraged.

All meetings will cover the same material, so feel free to attend the most convenient one for your schedule.

We have added additional meetings in November in Wheaton at the new public library and in Germantown at the Upcounty Regional Services Center.

Montgomeryplanning.org  
/walkinghere

# Community Advisory Group

- Representatives from around the county
- First meeting February 27
  - Develop Plan Goals and Objectives
- Public participation welcomed



# #WalkingHere

- Share your walk story with us
  - Using social media (#walkinghere)
  - Through the project website form



Answer one of these questions with your photo, video or comment:

- #WalkingHere is hard because \_\_\_\_\_.
- #WalkingHere feels unsafe because \_\_\_\_\_.
- #WalkingHere is easy because \_\_\_\_\_.
- I love #WalkingHere because \_\_\_\_\_.
- #WalkingHere could be better if \_\_\_\_\_.





# Thank You!

Eli Glazier

[eli.glazier@](mailto:eli.glazier@montgomeryplanning.org)

[montgomeryplanning.org](http://montgomeryplanning.org)

MONTGOMERY COUNTY'S  
**PEDESTRIAN**   
**PLAN**