

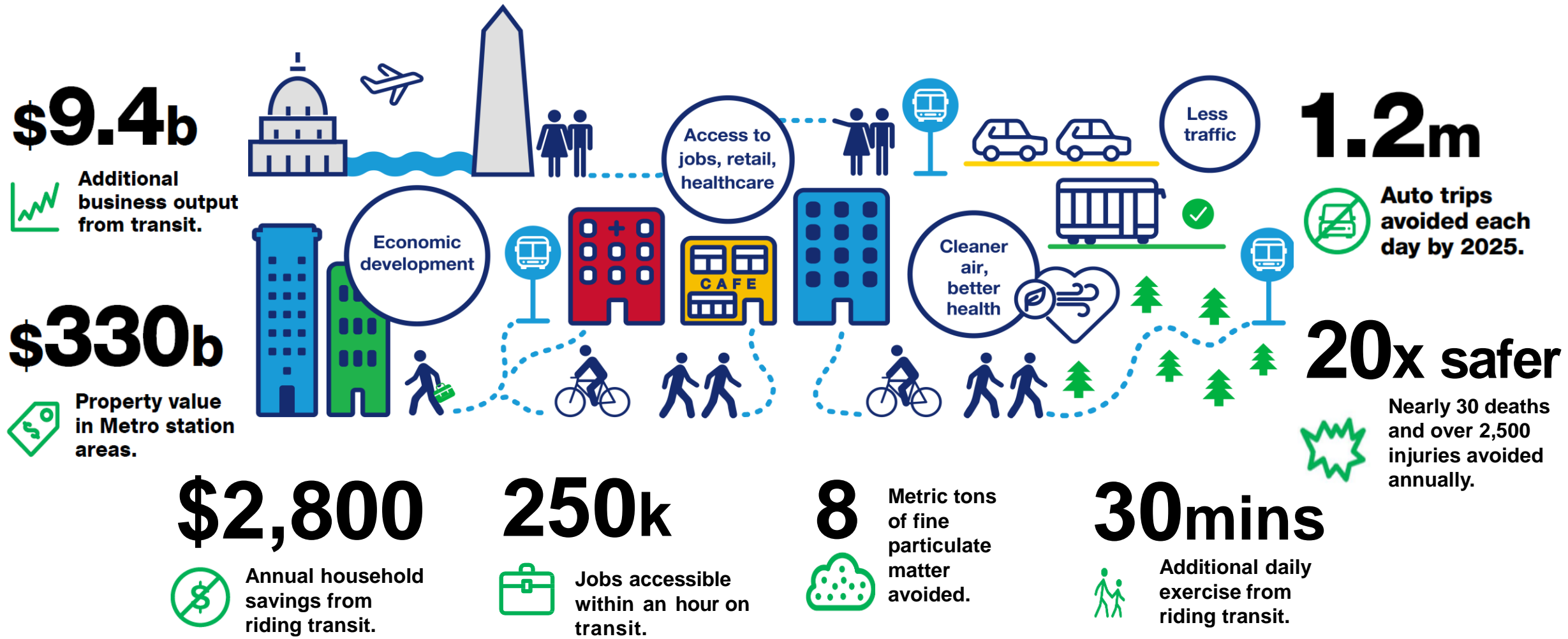
Metro Update for the North Bethesda TMD

Charlie Scott
Government Relations Officer - Maryland



Transit Is Essential to Our Region

Metro Update



Metro's Impact by the Numbers

Metro Update

9

years of consecutive clean audits

2

consecutive years leading country in ridership growth

92%

record rail-customer satisfaction

83%

record bus-customer satisfaction

98.7%

uptime for escalators

40%

reduction in crime — lowest level in seven years

14

certified energy-efficient buildings

82%

reduction in fare evasion at stations with modified fare gates

4

long-term board-approved collective bargaining agreements

\$100M

invested in partnership for affordable housing

12,000

customers enrolled in Metro Lift

\$500M

two-year reduction in operational and capital budgets

250M

trips in 2024

24/7

fourteen DC bus routes operating overnight

54%

decrease in rail-safety incidents over past two years

13,000 employees. Countless achievements. **One Metro.**

*Rail and bus satisfaction numbers from 2024



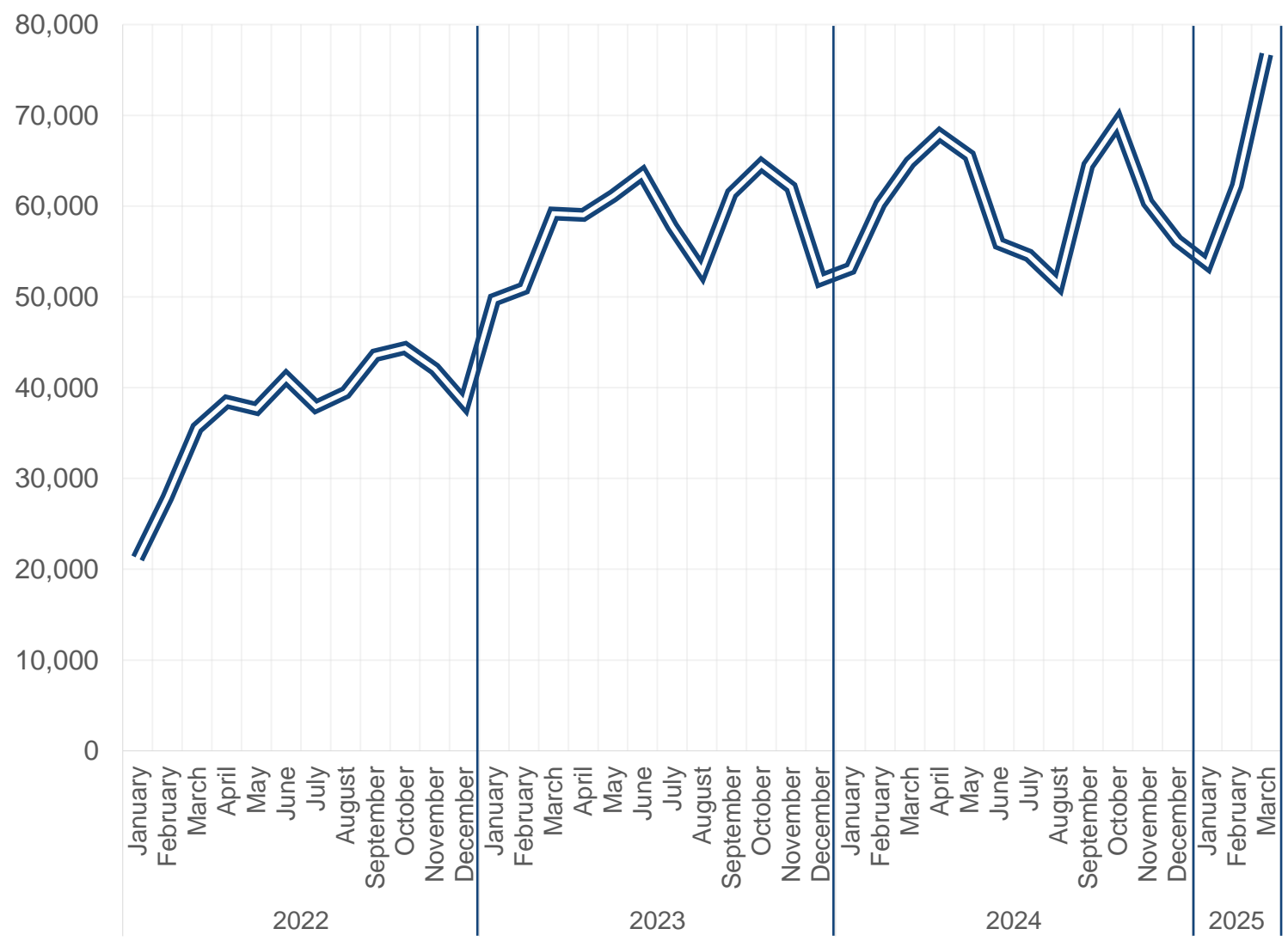
49 Consecutive Months of Ridership Growth

- **950K trips per day last week – 3rd-highest since 2020**
- *Six 1-million-trip days in March and April, and counting as of April 28*
- *Two consecutive weeks with over 6 million trips during Cherry Blossoms*
- *710K Metrorail trips on March 29, second busiest Saturday since 2011 and the busiest day since 2019*
- *Metrobus exceeding 2020 ridership levels*
- *On April 9, there were 118,470 trips by federal employees, the highest since 2020*
- Cherry Blossom Festivities
 - *Parade*
 - *10-Miler*
 - *Tidal Basin Viewing*
- Nationals, Spirit and United Back in Action
- Upcoming:
 - *World Pride May 17- June 8*
 - *Capitals playoffs ongoing*
 - *FIFA Club World Cup June 18-26*

Marylanders Are Returning to Metrorail

Metro Update

AVERAGE DAILY ENTRIES: JAN 2022 - MAR 2025



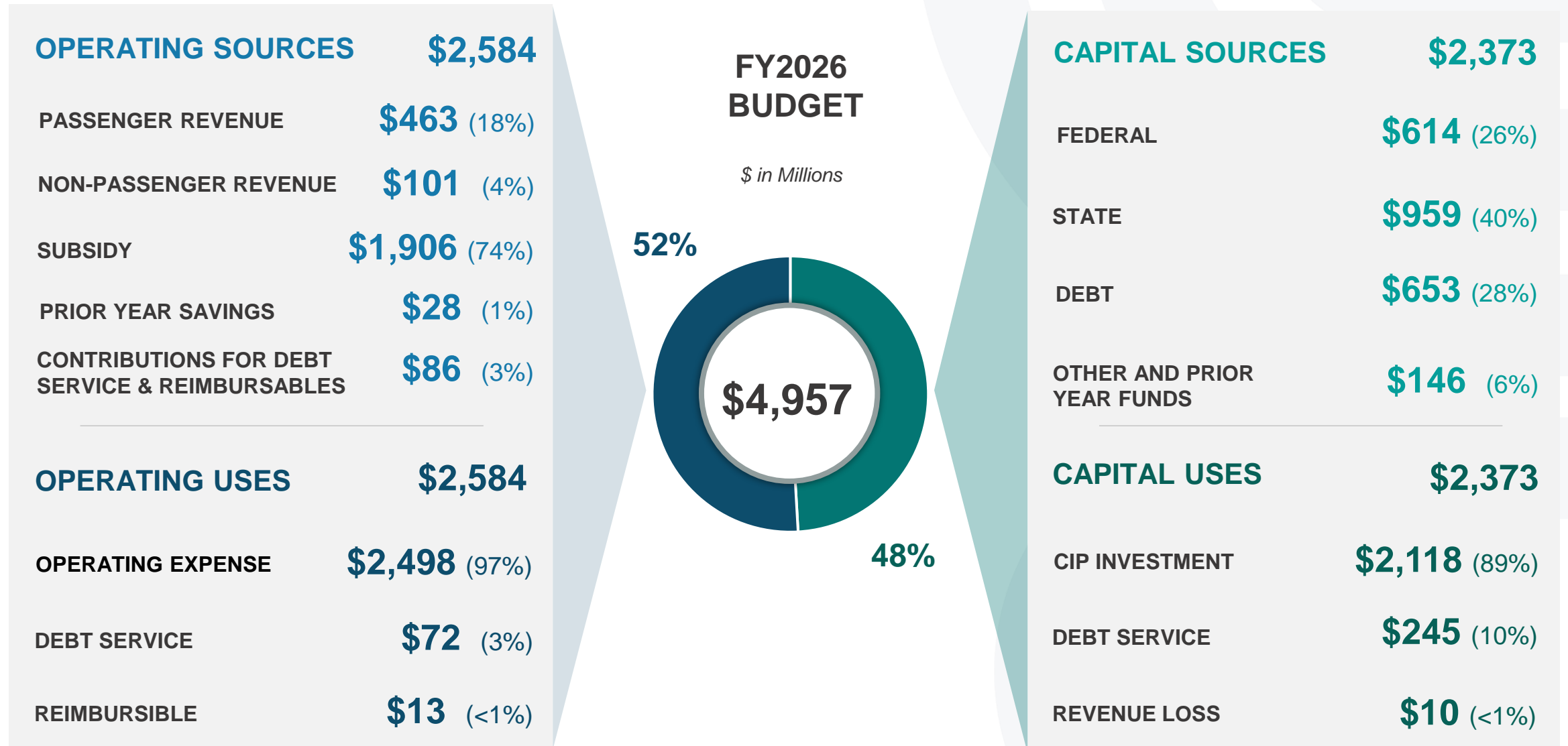
The number of trips originating at Maryland Metrorail stations **continues to grow month-over-month.**

March 2025 saw the **highest ridership at Maryland Metrorail stations since the pandemic**, with over 76,000 average daily rail entries that month.

Average weekday entries at Maryland stations have recovered to **57 percent of pre-pandemic levels**, with 69,000 average daily entries on weekdays in 2024, compared to 121,000 in 2019.

FY2026 Budget Summary

FY2026 Budget Summary and Six-Year
Capital Improvement Program



**For Gross Revenue Bonds*

***Includes Joint Development projects*

***Charts and table totals may not sum due to independent rounding

Coming to Metro in 2025 & Beyond


A New Bus Network


Metro Update

The 2025 Better Bus Network Redesign represents Metro’s commitment to improving service and connections **using the resources we have today**. By changing bus routes and service times, this network better connects the region, increases access to better bus service, and makes the bus more convenient.

The network redesign **will go into effect on June 29th**.

-  First Network Redesign in 50 Years
-  Revenue Neutral
-  Better Connects the Region
-  Makes the Bus More Convenient to Use
-  Improves Service on Evenings & Weekends
-  Fills Service Gaps
-  Better Service for Our Customers Today


metrobus

ENDS JUNE 28	33, 36, G8, 11Y
STARTS JUNE 29 2025	D20  Gallery Place
	D72 Lafayette Sq
	D92 Chinatown
	F19 Potomac Park
202-GO-METRO #1234567	

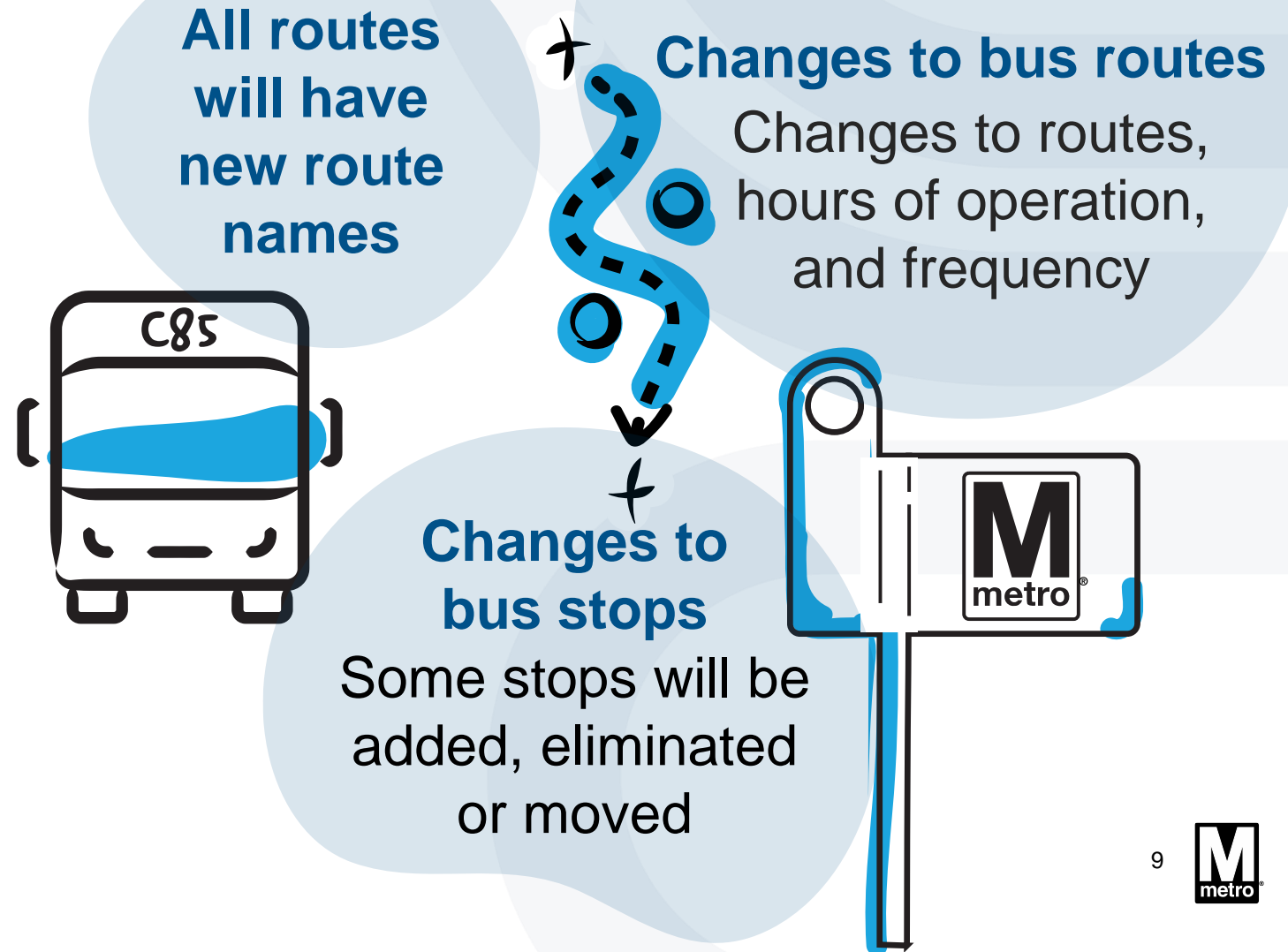
Our Message to Customers: Your Route is Changing on June 29!

Metro Update

Bus routes are changing.
Yes, even yours!

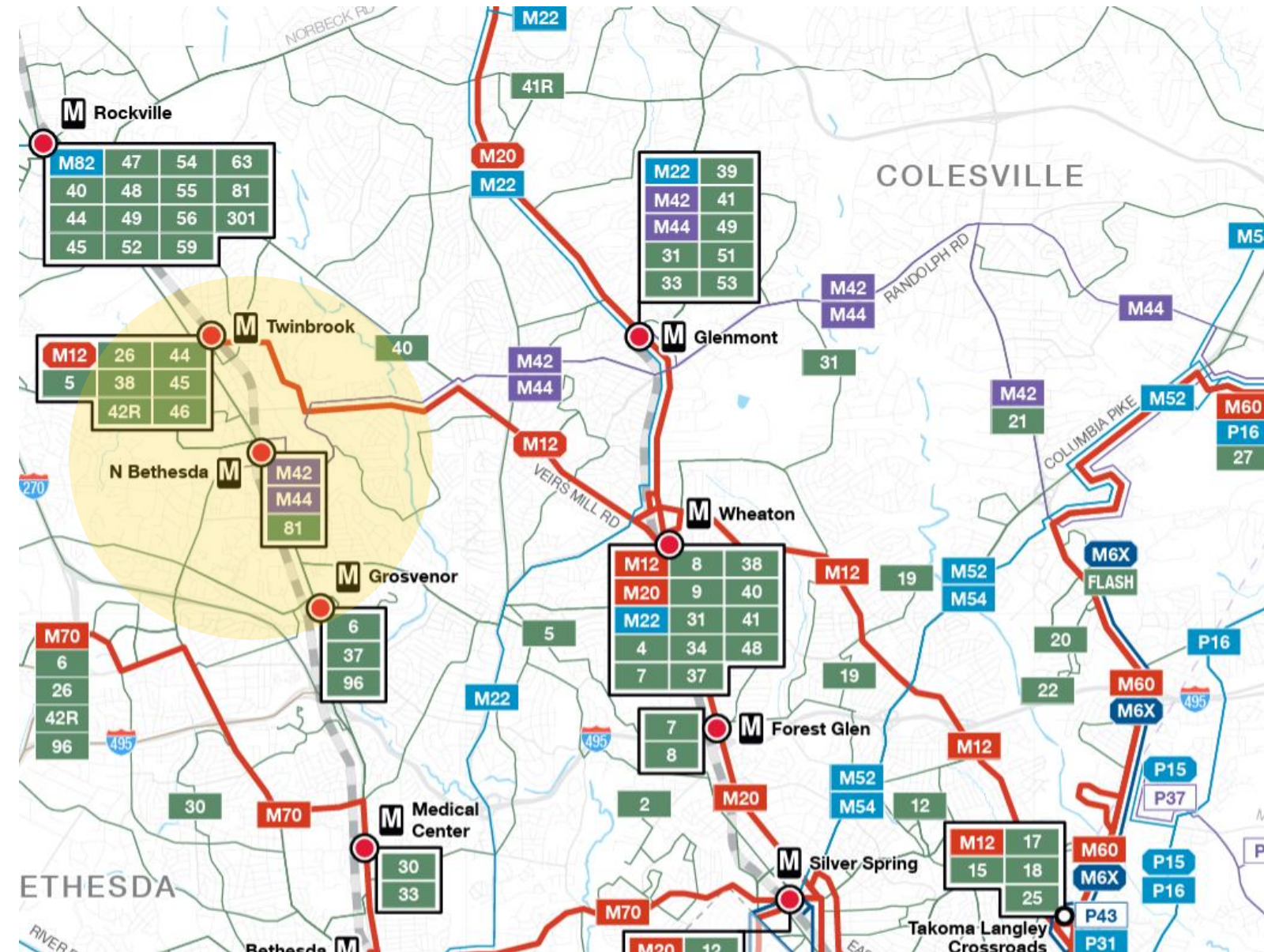
With all this change, we
have materials to help
explain what the new
network means for you, your
family, and your community.

You do not need to learn
every single change for the
network to work for you.



Existing & New Connections in North Bethesda

Metro Update



M42: Randolph Rd – College Park

Similar: C8

Weekdays: Every 22-35 min

Saturdays: Every 60 min

Sundays: Every 60 min

M44: Randolph Rd – Hyattsville Crossing

Similar: 83, C8

Weekdays: Every 30 min

Saturdays: Every 60 min

Sundays: Every 60 min

M12: University Boulevard

Similar: C2, C4

Weekdays: Every 8-15 min (Every 30 min Late Nite)

Saturdays: Every 12-17 min (Every 30 min Late Nite)

Sundays: Every 12-16 min (Every 30 min Late Nite)

M82: River Rd – Falls Rd

Similar: T2

Weekdays: Every 30 min

Saturdays: Every 30 min

Sundays: Every 30 min

RideOn Routes

5: Silver Spring – Twinbrook via North Bethesda

26: Montgomery Mall – Glenmont via North Bethesda

38: Wheaton – North Bethesda

42: Montgomery Mall – Twinbrook via North Bethesda

44: Twinbrook – Rockville via North Bethesda

45: Rockville Regional/Rockville Senior Center/Twinbrook

46: Montgomery College – Rockville – Medical Center

81: Rockville to North Bethesda

BBNR Briefings & Outreach

Metro Update

Metro is distributing informational materials at briefings and community events to prepare the region for the coming bus network change, and to support customers after Launch Day

Briefings & Events

- Better Bus Network Briefings for Maryland Leaders: April 30 (12:00PM) & May 1 (10:00AM)
- Transit Partner Training Sessions: Mid-May
- Ride Alongs & Bus Stop Chats: June & July
 - C2, E4, L8, Q2, Q4, Q6
 - Friendship Heights, Shady Grove, Silver Spring, and Rockville Metro Stations
 - RideOn will also be conducting ride alongs and bus stop chats throughout June and July
- Selected Community Events: Spring & Summer
 - Silver Spring Farmers Market

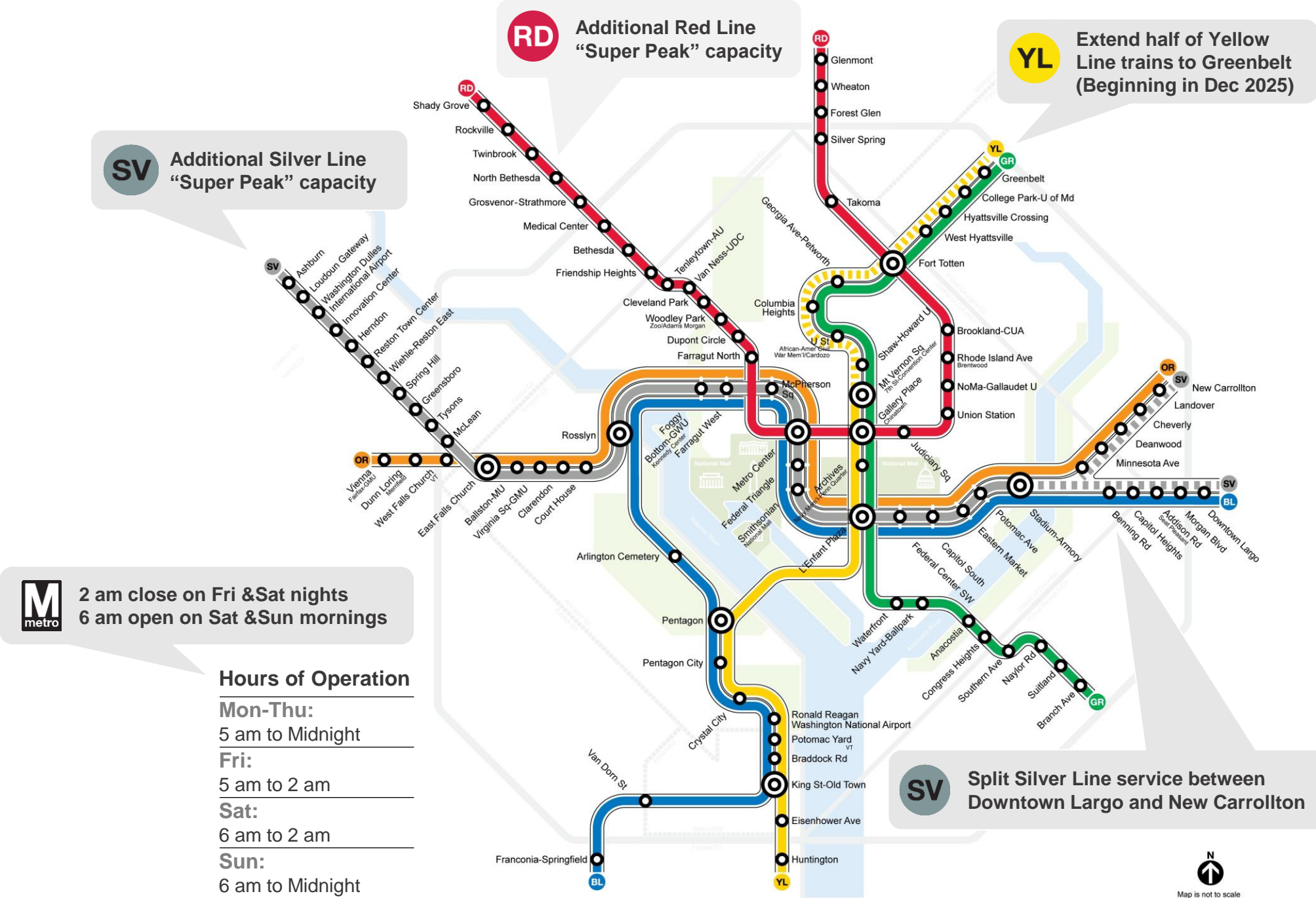
Informational Materials

- Trip Planner
- 202-GO-METRO
- Route Crosswalk Webpage
- Route Profiles
- Neighborhood Profiles
- Communications Toolkit

Rail Service Changes in FY26

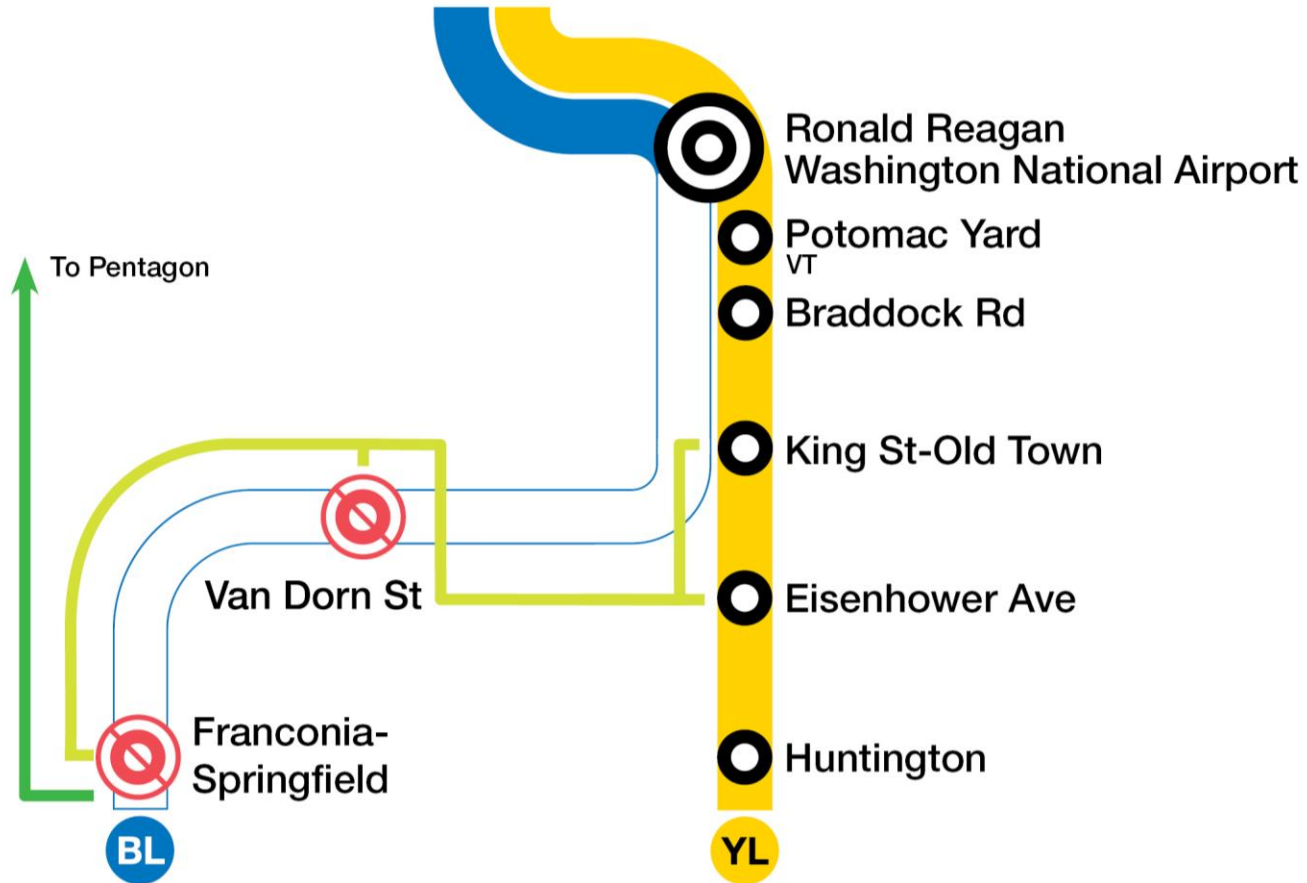
Responsive to customer needs, Metro will implement the following rail service changes as a part of our FY26 budget, starting on July 1. These proposals received public comment and were approved by Metro’s Board.

Change	Impact on Maryland Riders
Yellow Line Extension to Greenbelt: Currently, Yellow Line trains run from Huntington and terminate at Mt. Vernon Square. Beginning in December 2025, Metro is extending half of these trains to Greenbelt with the rest continuing to end at Mt. Vernon Square. Trains will alternate, with every other Yellow Line train running to Greenbelt.	Increased frequency between Mt. Vernon Square & Greenbelt. One-seat ride from Greenbelt to DCA.
Extended Weekend Hours: Currently, the rail system opens 7AM on Saturday and Sunday mornings, and closes at 1AM on Friday and Saturday nights. Metro will open the rail system at 6AM on Sat. & Sun., and close at 2AM on Fri. & Sat.	Early morning and late-night service on all Metrorail lines on the weekend.
Silver Line Split at Stadium Armory: To balance service between the Blue & Orange Lines, Metro will split Silver Line trains at the Stadium Armory Station by sending half to New Carrollton along the Orange Line, and half to Downtown Largo along the Blue Line.	More balanced service, increasing frequency between Stadium Armory and New Carrollton and decreasing frequency to Downtown Largo.
Red Line Super-Peak: To improve speed and capacity during rush hour, Metro will run a new “super-peak” service that would reduce wait times between Red Line trains at the busiest travel times at all Red Line stations.	Reduced wait times between Red Line trains during busiest portion of morning and evening rush hours from Shady Grove to Glenmont.
Silver Line Super-Peak: To improve speed and capacity during rush hour, Metro will run a new “super-peak” service that would reduce wait times between Silver Line trains from Wiehle-Reston East and Stadium Armory at the busiest travel times.	Limited impact to Maryland residents; Adds capacity and reduces crowding in the busiest portion of Silver Line.



Summer Track Work Phase 1: July 5 - July 26

Metro Update



Affected line

No **BL** between Franconia-Springfield and Ronald Reagan Washington National Airport



Free shuttle bus service provided

Local



Between Franconia-Springfield, Van Dorn St
Eisenhower Ave and King St-Old Town

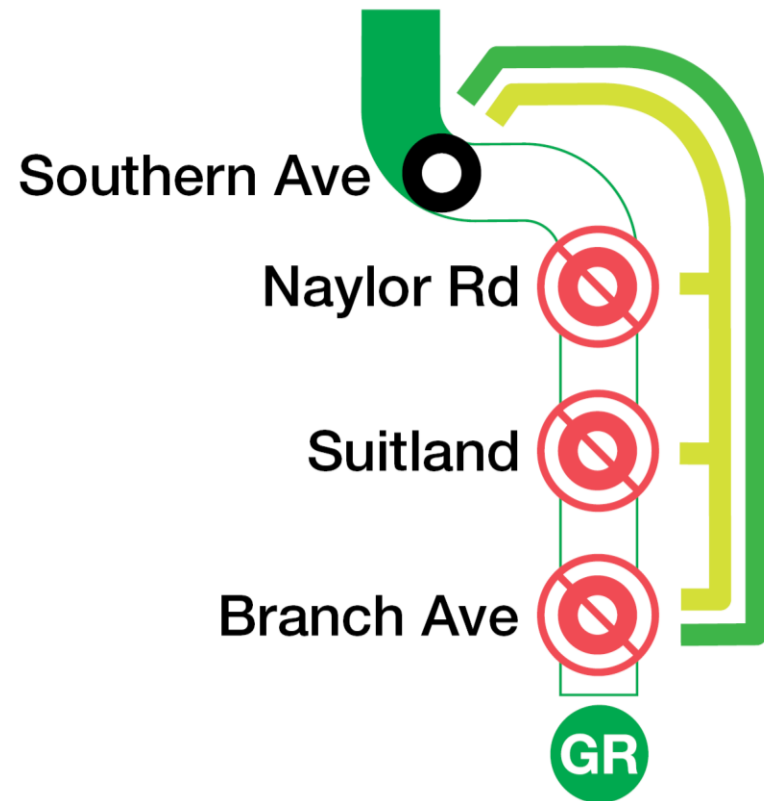
Express



Between Franconia-Springfield and Pentagon

Summer Track Work Phase 2: Aug 2 - Aug 31

Metro Update



Affected line

No **GR** between Branch Ave and Southern Ave*

*Extends to Anacostia weekends of Aug. 9-10 and 16-17



Free shuttle bus service provided

Local



Between Branch Ave, Suitland, Naylor Rd and Southern Ave

Express 1



Between Branch Ave and Southern Ave

Regional Coordination Through DMV*Moves*

Metro Update

DMV*Moves* is a joint initiative of the Metropolitan Washington Council of Governments (COG) and WMATA to create a **unified vision and sustainable funding model** for the region's transit network

- Throughout 2025, a task force of officials appointed by COG and WMATA from the District of Columbia, Maryland, Virginia, and the federal government will be guiding this initiative alongside two workgroups representing area jurisdictions, transit service providers and agencies, and business, labor, and community organizations
- Goals include: Identifying a sustainable funding source for Metro, aligning regional mobility goals and strategies, and realizing cost efficiencies among regional partners.
- Maryland DMV*Moves* Task Force Members:

Senator Malcolm Augustine; County Executive Marc Elrich; Acting County Executive Tara Jackson; Delegate Marc Korman; MDOT Assistant Secretary & WMATA Boardmember Joe McAndrew; Councilmember Kate Stewart



DMV*Moves* Working Groups

Metro Update



Fare Policies

Integrate and align fare policies to provide consistent customer experience



Service Guidelines

Adapt shared service guidelines for when and how often transit providers operate and measure performance



Wayfinding & Amenities

Improve wayfinding, customer information, and amenities at transit stops

Bus Priority

Implement bus priority strategies to get best value from high frequency routes



Shared Assets & Group Procurements

Explore shared usage of assets & resources, and group procurements



Training & Certification

Make training, certification, and inspection programs more consistent across the region



Thank you!

Charlie Scott
Government Relations Officer – Maryland
cscott@wmata.com

Washington Metropolitan
Area Transit Authority