



Montgomery Planning

# 2024 Growth and Infrastructure Policy

**North Bethesda TMD**  
April 24, 2024

# Introduction

- Montgomery Planning initiates an update of the County's **Growth and Infrastructure Policy (GIP)** every 4 years.
- Planning Board transmits a draft to the County Council by **August 1.**
- County Council adopts the 2024-2028 policy by **November 15, 2024.**



# What is the Growth and Infrastructure Policy?

- Directs the Planning Board's administration of the **Adequate Public Facilities (APF)** requirements.
- Guides **adequacy assessment** during the development review process.
- **Sets the adequacy standards**, criteria for evaluation, and requirements for mitigation.
  - Making an adequacy determination involves both forecasting future impacts from private development **and** assessing the condition of existing public infrastructure.



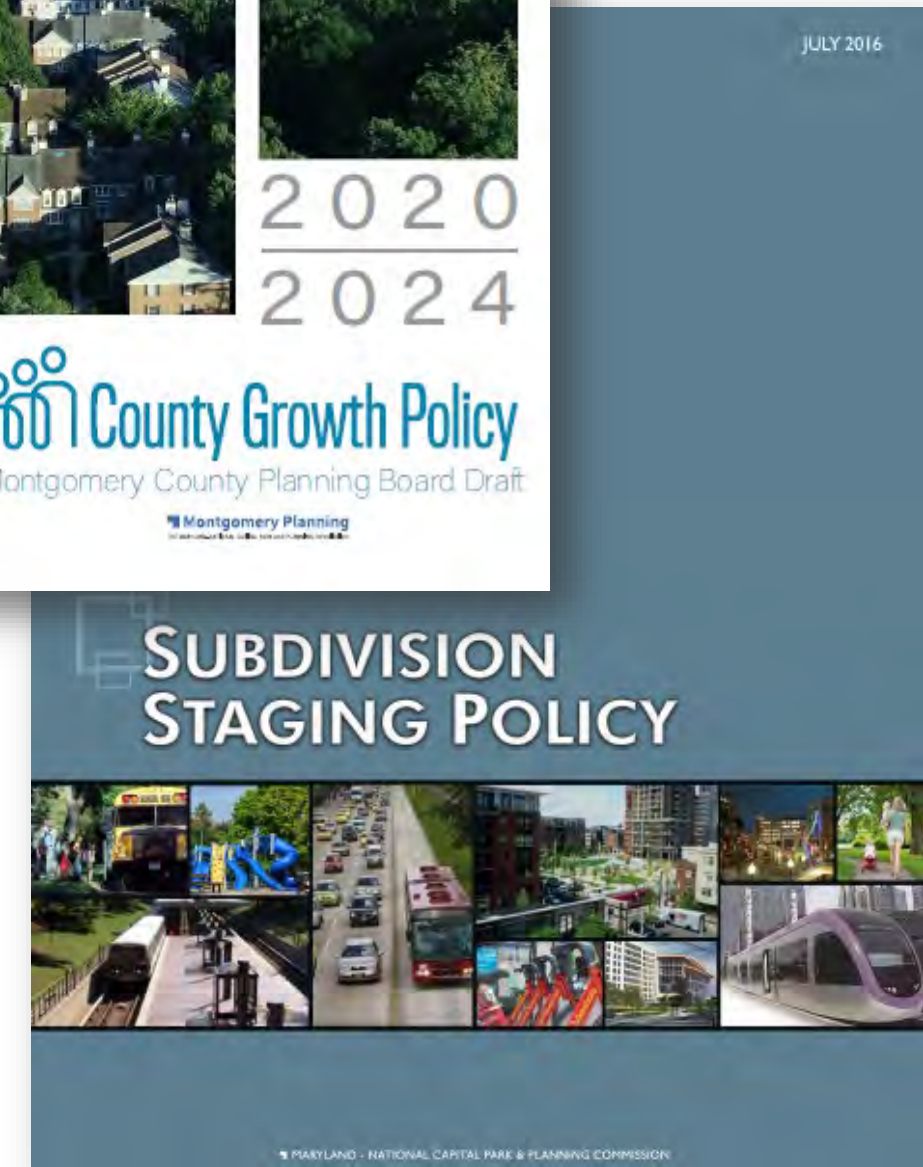
# 2024 Update: Themes

- Review the Performance of the 2020-2024 GIP
- Consider the County's Current Growth Trends
- Make Policy Implementation Clearer and More Efficient
- Review Development Impact Taxes
- Align the Policy with Updated County Priorities



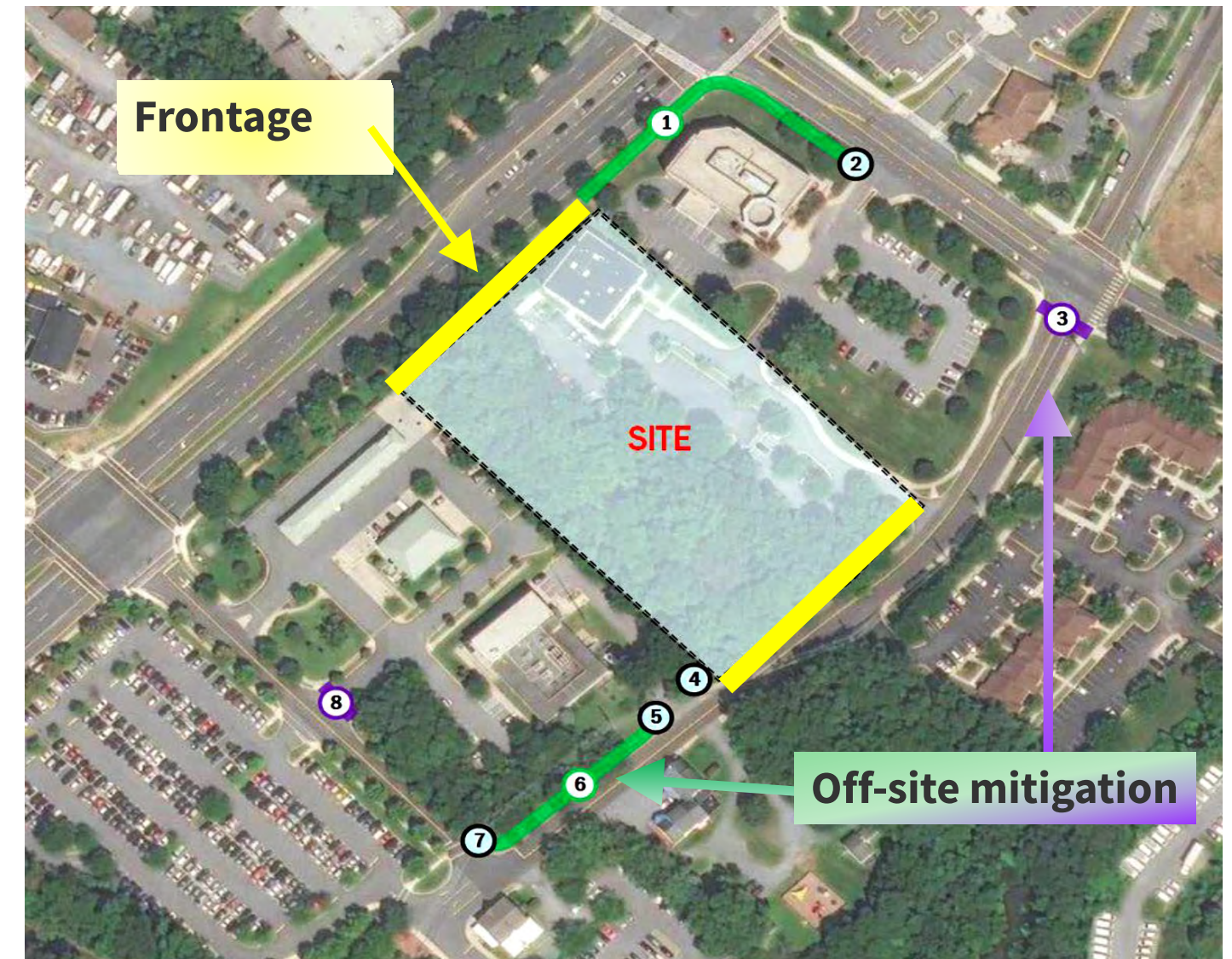
# Transportation Previous Updates

Moved the policy away from strategies exclusively concerned with reducing congestion and...  
toward ones making walking, biking, and transit safer and more convenient.



# Off-Site Improvements

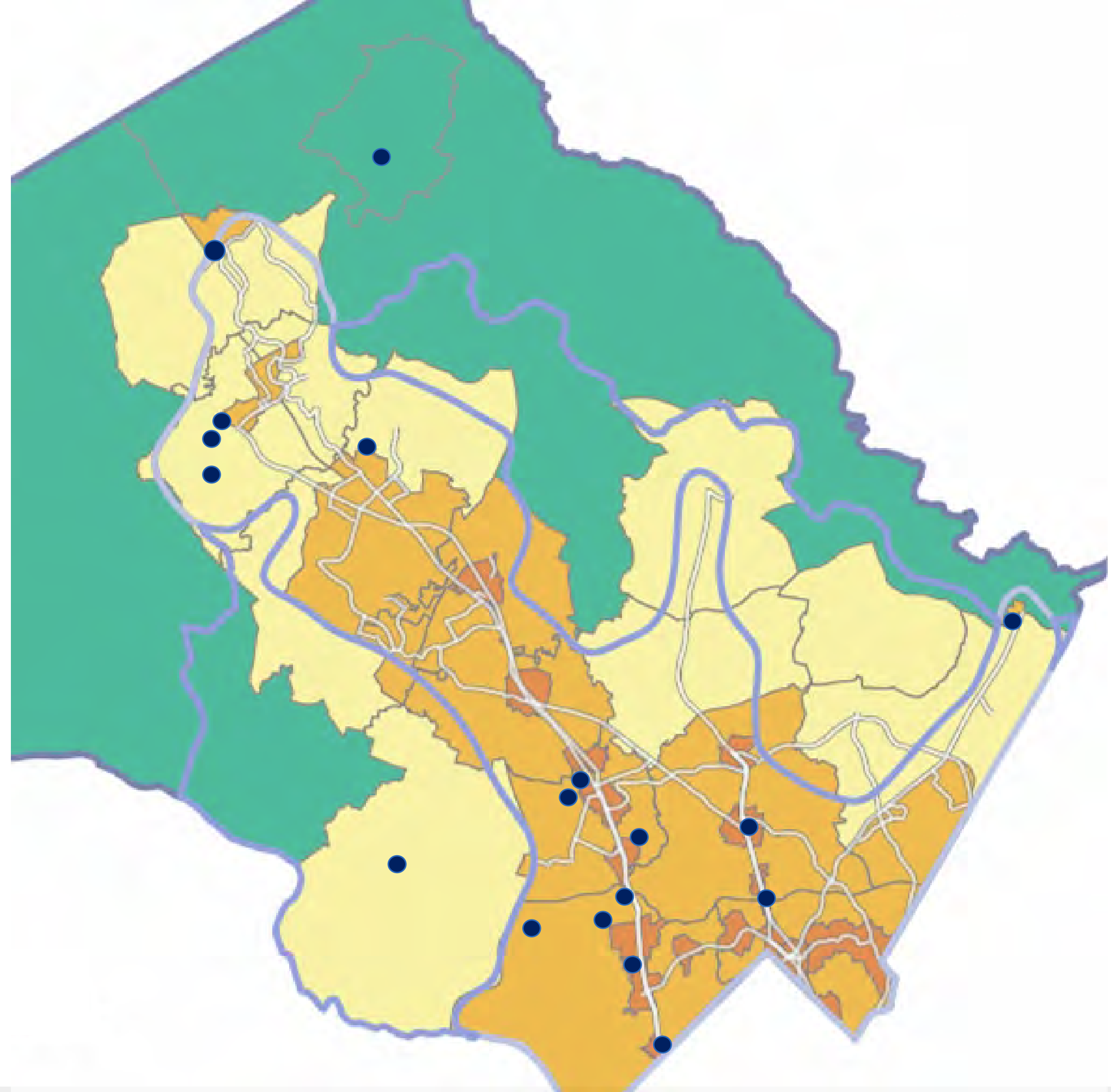
- Only addresses off-site transportation facilities.
- Local Area Transportation Review (LATR)
  - Series of multi-modal tests
  - Required for projects with 50+ net new trips
- Evaluate conditions, identify deficiencies, and develop list of mitigations.



# LATR Outcomes

- 17 plans with LATR mitigation conditions under the 2020-2024 GIP.
- **Off-site mitigation (conditioned):**
- \$7.25 million total, including \$3.14 million in mitigation payments and \$4.11 million in constructed improvements.

Improvement Type	Quantity
ADA Curb Ramps	22
Bus Shelters	3
High Visibility Crosswalks	6
Separated Bike Lanes	2,300 ft
Sidewalks	3,450 ft
Sidepaths	4,600 ft
Streetlights	5
Traffic Signals	1
Turn Lanes	1



# Transportation Recommendation Highlights



# Transportation Feedback

## **Policy Implementation:**

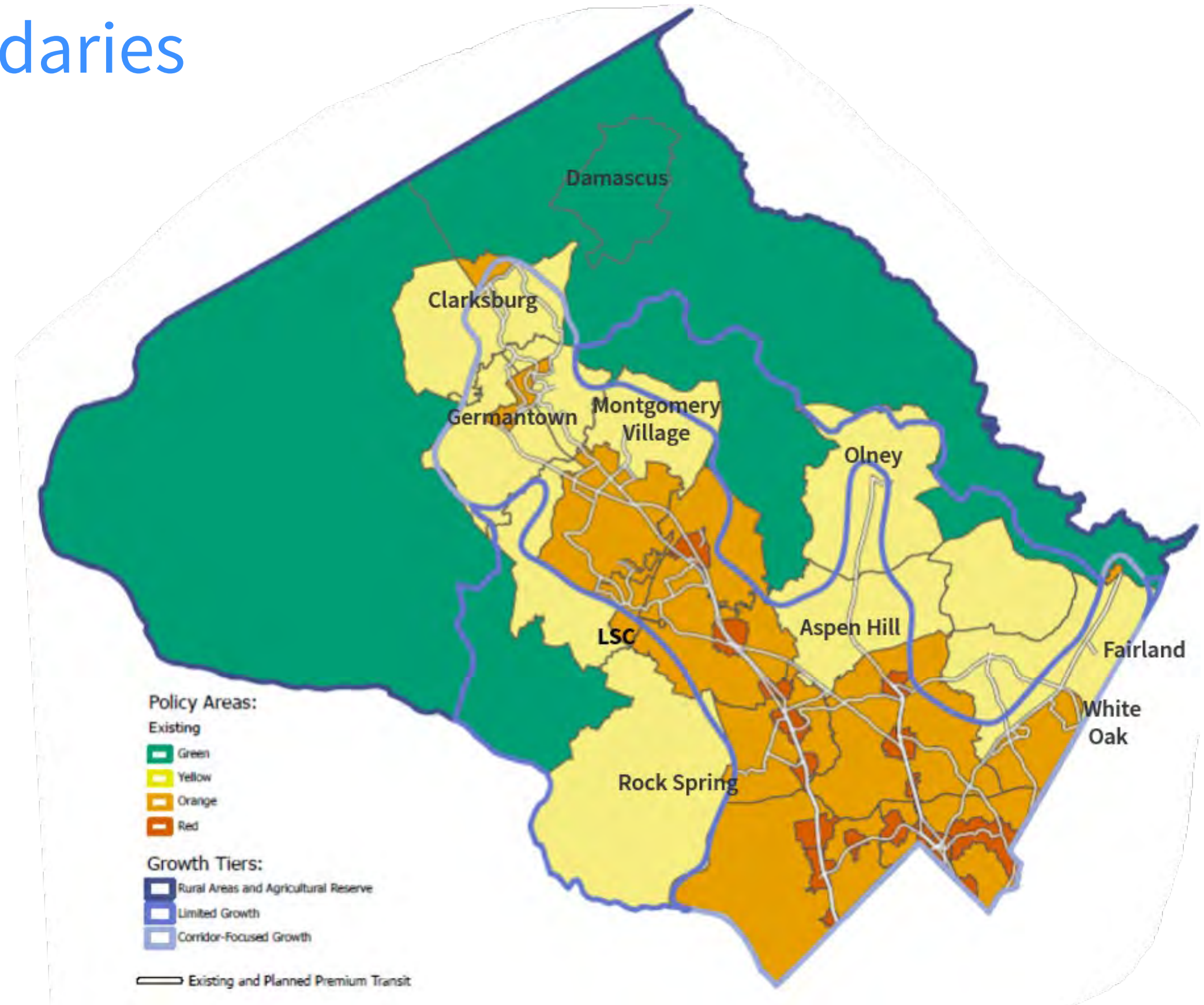
- Ensure analysis and mitigation are reasonably related to the size and impact of the development project, particularly in areas targeted for compact growth.
- Opportunities to increase fairness, transparency, and predictability.

## **Transportation Impact Taxes:**

- High rates deter housing production.
- Requests for expansion of impact tax credits.
- Concerns about shifting additional cost burdens onto the County.

# Update Policy Area Boundaries

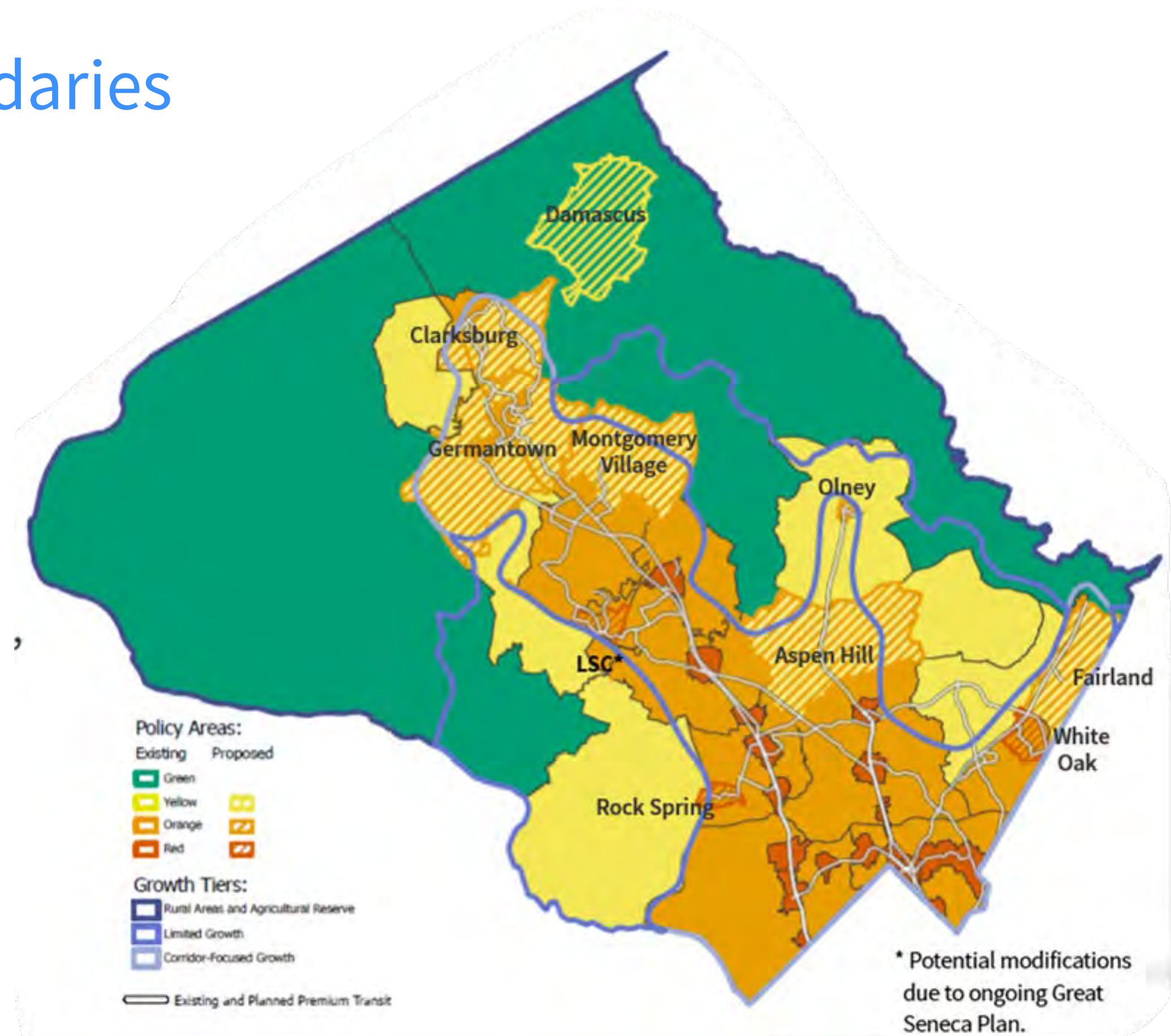
- **Red** – Central business districts, high-density development, premium transit service.
- **Orange** – Corridor cities and town centers with planned premium transit.
- **Yellow** – Lower-density areas residential neighborhoods with community-serving commercial areas.
- **Green** – The county’s Agricultural Reserve and rural areas.



# Update Policy Area Boundaries

## Recommendation

- **Red:** Great Seneca Life Sciences area, FDA Village in White Oak, and Rock Spring
- **Orange:** Aspen Hill, Germantown East and West, Montgomery Village, Olney Town Center, and parts of Colesville-Fairland & Clarksburg
- **Yellow:** Damascus



# Measure Impact with Motor Vehicle Trips

- Person trips serve as the threshold for
  - Conducting an LATR study
  - Determining the size of the study area

## Recommendation:

- Replace peak-hour person trips with **peak-hour vehicle trips.**



# Transportation Adequacy Tests

- Motor Vehicle
- Pedestrian System
- Bicycle System
- Bus System

**Recommendation:** Simplify the policy, making it more effective, transparent, and predictable.

# Ensure Proportional Requirements

- Proportionality Guide
  - Sets cost limit for mitigation*
    - Predictable
    - Reasonable
- Needs further evaluation to account for impact

## **Recommendation:**

- Develop a new trip-based formula to better account for impacts.



# LATR Exemptions

## Recommendation:

- Exempt priority uses from off-site mitigation payments and construction:
  - Affordable Housing
  - Multifamily 3+ bedroom units



# LATR Exemptions

## Recommendation:

- Exempt priority uses from the requirement to complete an LATR study.
  - Bioscience (extend until Jan. 2029)
  - Daycares

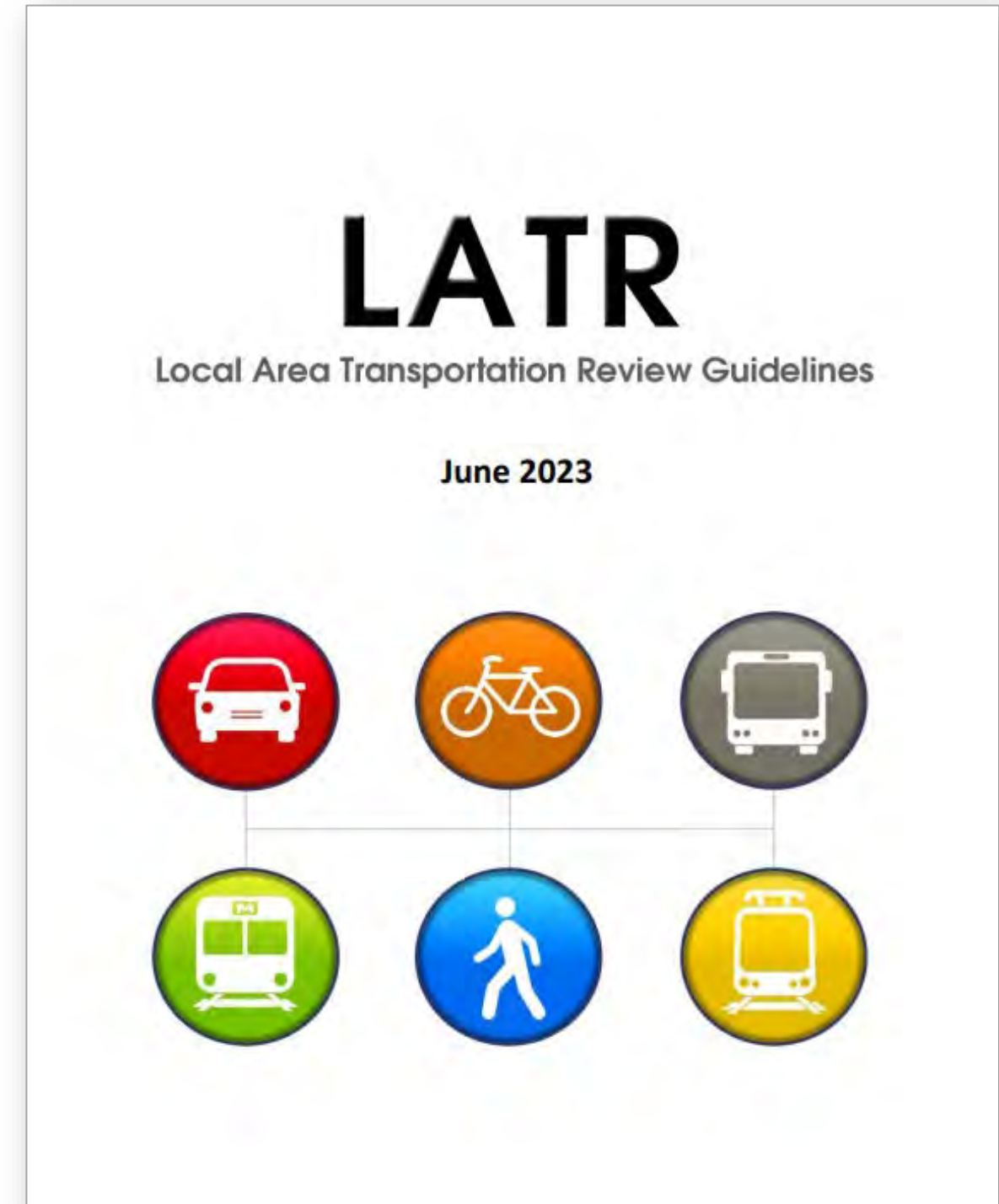




# Update the LATR Guidelines

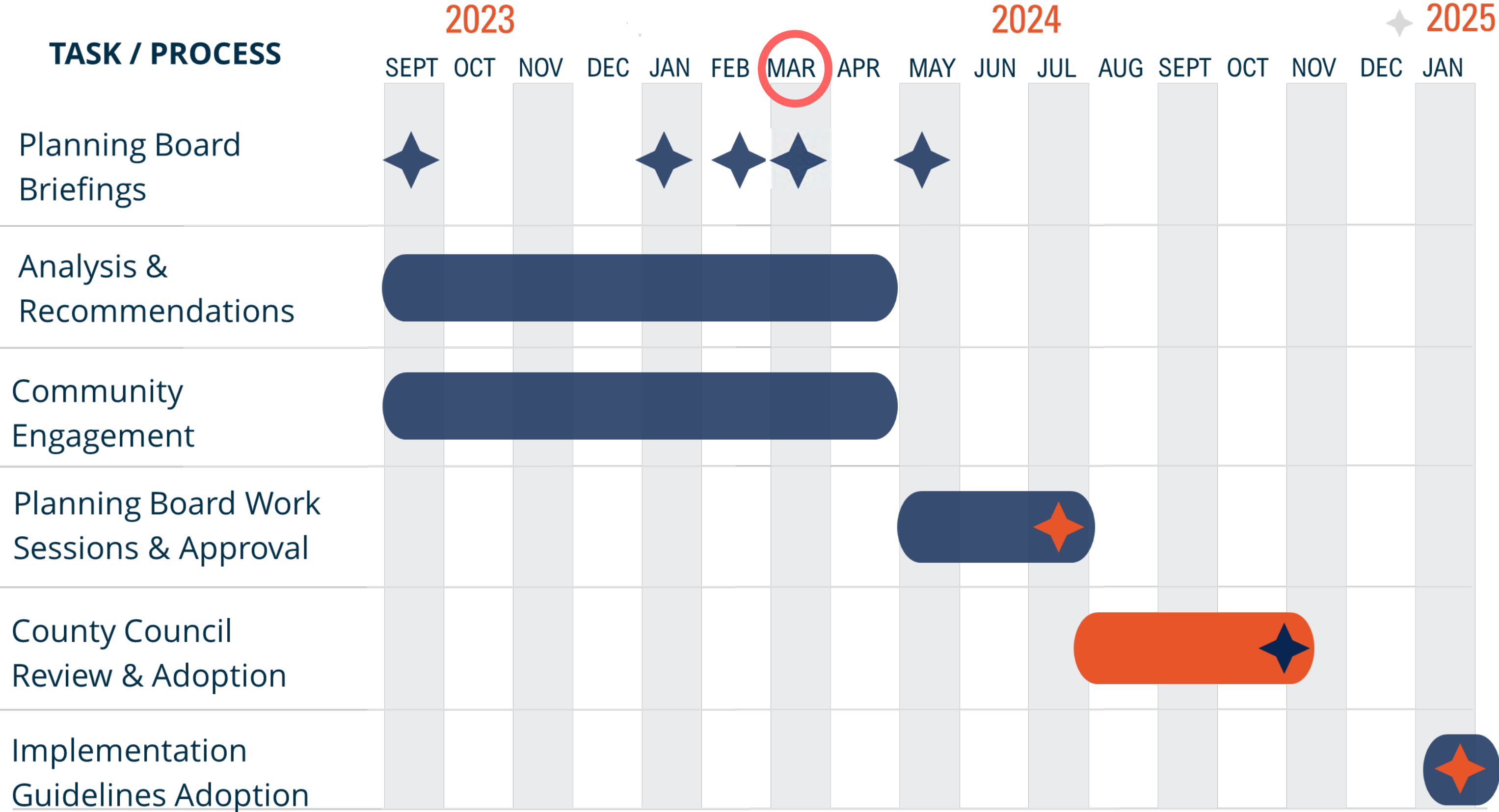
## Recommendation:

- Reorganize and update the LATR Guidelines with clarity and ease of use in mind.



# Next Steps

# Project Schedule



# Upcoming Milestones

- **May 2:** Growth and Infrastructure Policy Working Draft Posted
- **May 9:** Planning Staff briefs the Planning Board on the Working Draft
- **May 23:** Growth and Infrastructure Policy Public Hearing

# Questions?



# Thank you!

## Montgomery County Planning Department

Website: [montgomeryplanning.org](https://montgomeryplanning.org)

Twitter: @montgomeryplans

Facebook: Facebook.com/montgomeryplanning

Instagram: @montgomeryplanning

**Darcy Buckley**, Project Manager,  
Countywide Planning & Policy

[Darcy.Buckley@montgomeryplanning.org](mailto:Darcy.Buckley@montgomeryplanning.org)

(301) 495-4514

**Lisa Govoni**, Project Manager,  
Countywide Planning & Policy

[Lisa.Govoni@montgomeryplanning.org](mailto:Lisa.Govoni@montgomeryplanning.org)

(301) 650-5624