

capital bikeshare



Capital Bikeshare Expansion to Montgomery County Public Meeting 11/29/11

1,100+ BIKES  JOIN.  TAKE.  RIDE.  RETURN.

capital bikeshare

WHY BIKESHARING?

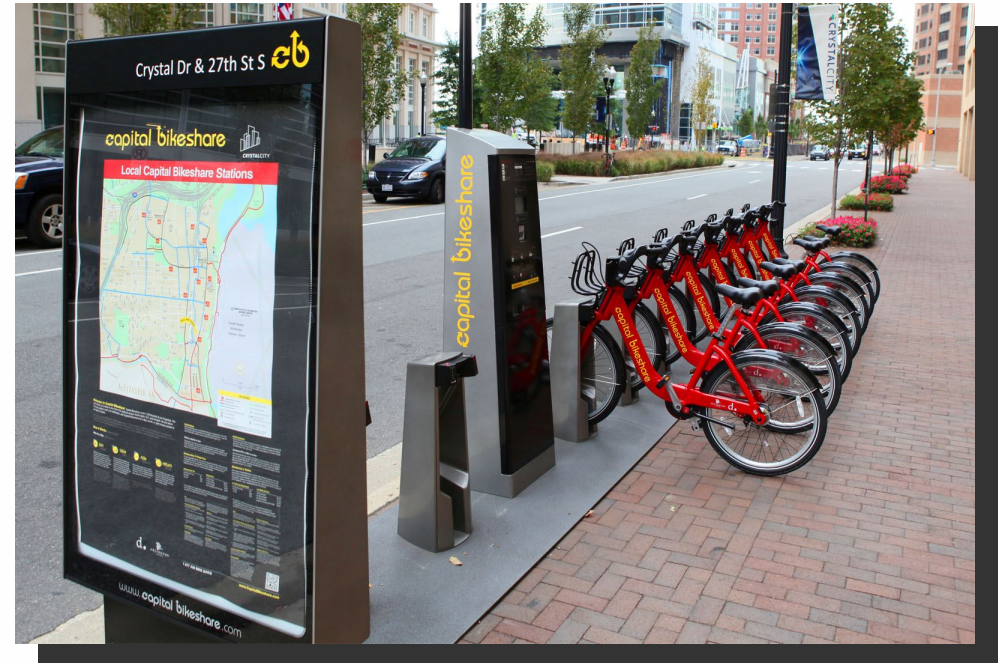
- Expands travel options for Montgomery's residents, workers, and visitors.
- Extends the reach of transit.
- Supports transit-oriented mixed use neighborhoods where many destinations are only a 10-15 minute bike ride away.
- Fits in with a broader program to promote an economically and environmentally sustainable community that is less auto-dependent, and promotes increases in non-single occupant vehicle mode share.



capital bikeshare

WHAT IS CAPITAL BIKESHARE?

- A bike transit service started by the Arlington County and D.C. governments.
- 1,100+ bikes at 125 docking stations.
- Operated by Alta Bicycle Share.
- Launched on September 20, 2010.
- Bike transit. Not the same as bike rental.
- Designed for point-to-point, relatively short trips.
- Complements other transport modes and works best in dense urban areas.



capital bikeshare

HOW TO USE CAPITAL BIKESHARE



<http://www.youtube.com/watch?v=qQ62cQiGF18>

1,100+ BIKES



JOIN.



TAKE.



RIDE.



RETURN.

capital bikeshare

THE STATIONS



- Solar-powered, modular design, not bolted down or wired to the grid
- Consist of docks, bikes, solar panel, kiosk, and map panel
- Station sizes: 11, 15, 19, and 23 docks
- Ideal bike to dock ratio is 50%

1,100+ BIKES  JOIN.  TAKE.  RIDE.  RETURN.

capital bikeshare



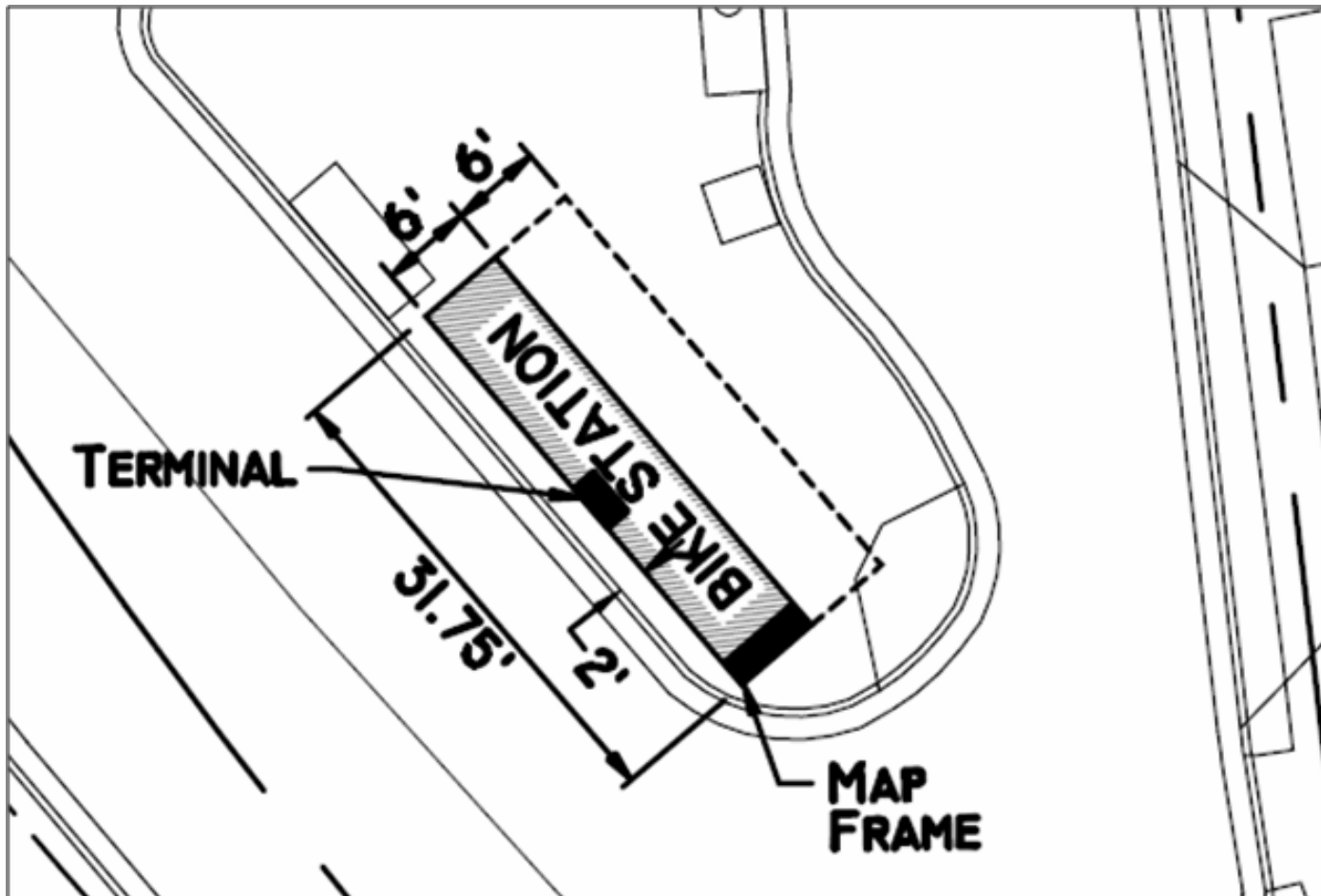
Balancing vehicle

STATION SPECIFICATIONS

Station Dimensions:					
Docks	Width	Station Depth	Access Depth	Total Depth	Weight
11	31'9"	6'	6'	12'	4000 lb
15	41'7"	6'	6'	12'	5200 lb
19	51'5"	6'	6'	12'	6400 lb
13 (U-shaped)	24'6"	12'6"	12'	24'6"	4600 lb
17 (U-shaped)	24'6"	12'6"	12'	24'6"	5800 lb

capital bikeshare

STATION SPECIFICATIONS (cont.)



capital bikeshare

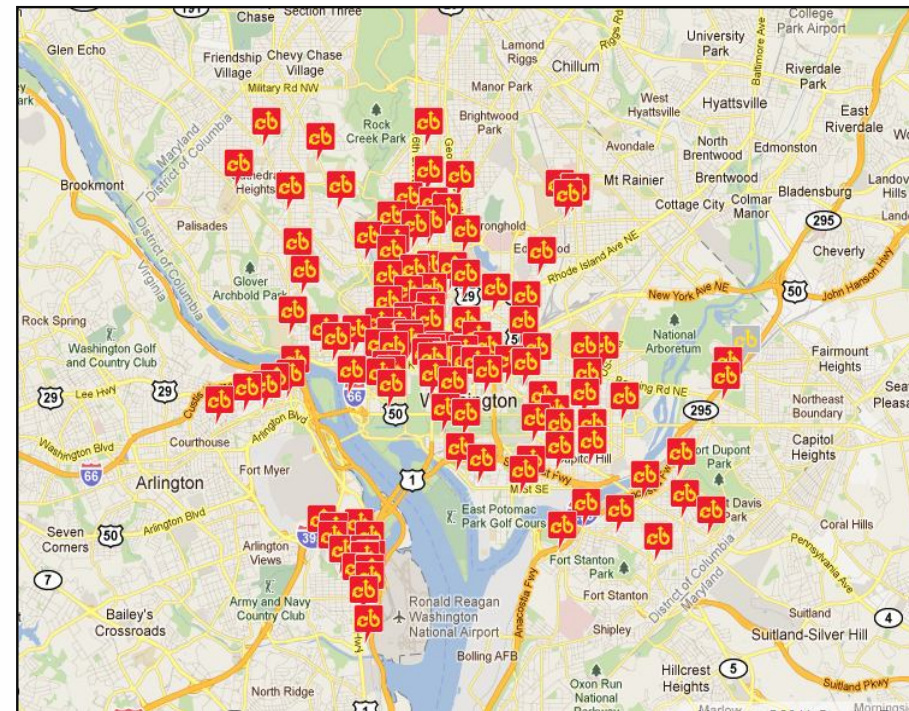
CAPITAL AND OPERATING COSTS

Station Size (Docks)	Bikes	Equipment & Installation	Approximate Annual Operating Cost
11	6	\$40,000	\$15,000
15	8	\$48,000	\$21,000
19	10	\$57,000	\$26,000

Capital Bikeshare

THE CURRENT NETWORK

Jurisdiction	Bikes	Stations
Entire Capital Bikeshare System	1,160	125
DC	1,040	105
Arlington	120	22
Montgomery:		
-Proposed MDOT grant	400	50
-Awarded JARC grant	200	20



capital bikeshare

CAPITAL BIKESHARE DATA

Category	Quantity (as of 11/15/11)
Annual members (total)	17,280
Month members (to date)	1,641
1-day and 3-day members (to date)	79,524
Total trips (system wide)	1,230,547
Average trips per day in July	4,559
Average trips per day in October	4,117
Trips per bike per day in July	4.0
Trips per bike per day in October	3.5
Average trip duration	19 minutes
Average trip distance	1.15 miles

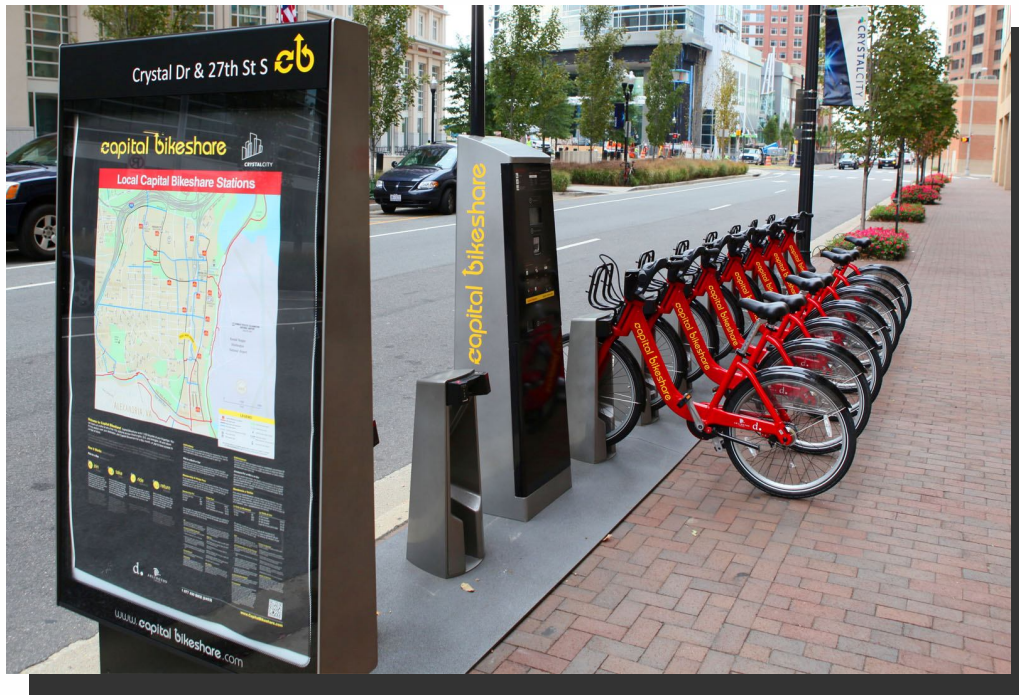
STATION SITING PROCESS

1. County staff identify locations in urban neighborhoods along both legs of Red Line.
2. Public input will assist in adjusting locations.
3. Apply for Maryland Bikeshare Program grant.
4. Once awarded, order 50 stations and 400 bikes.
5. County staff to ensure locations meet location criteria.
6. Develop a station plan of each proposed location.
7. Research ownership of land.
8. Obtain private agreements and permits.
9. Install stations during Fall - Winter 2012 (FY13).

capital bikeshare

STATION SITING OPTIONS

1. Public space: sidewalks, parks, or on-street



capital bikeshare

STATION SITING OPTIONS (cont.)

2. On-street in No Parking zones



capital bikeshare

STATION SITING OPTIONS (cont.)

3. Private space: sidewalks, plazas, or open space where legal agreements may be necessary



STATION SITING CRITERIA

Criteria for Locations

At least 4 hours of direct sunlight each day

Safety for cyclists, pedestrians, and motorists

Visible and easily accessible

Low impact on pedestrian and motorist sight distance

Adequate clearance on sidewalk or street

Free of obstruction of underground utilities, tree boxes, bus stops, ADA ramps

Close to transit, major employment sites, dense residential and retail

Boom truck access for installation

Minor arterials and lesser streets with slow speeds



capital bikeshare

CROWDSOURCING MAP FOR PUBLIC INPUT

<http://mobilitylab.org/bikearlington/crowdsourcing/sharemap.php>

Bike Arlington Capital Bikeshare "Suggest a Station" Crowdsourcing Map

Legend

- Your Current Suggestion
- Community Suggested
- Existing Bikeshare Locations
- Off Street Trails
- Bike Lanes & Sharrows
- On Street Routes

Location

Instructions

1. Zoom to the location where you want to suggest a station and click on the map to drop a pin. Add your comments and click Submit to publish your comment and the location suggestion.
2. To comment on someone else's suggestion click on that location pin and share your opinion by toggling the Like/Dislike buttons and filling in your comments. Click Submit to publish your comment.
3. Repeat: You can suggest and comment on as many locations as you like!

Your Input (Click here to login)

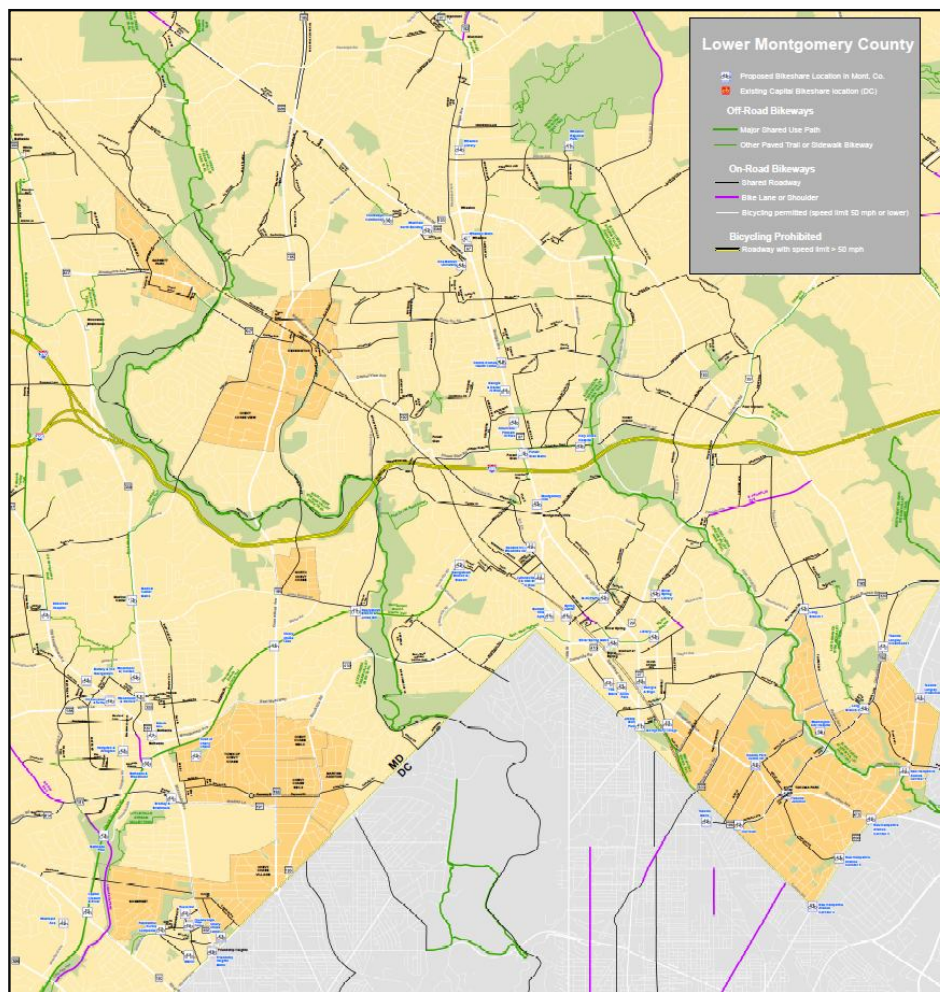
Comments

[Hide Sidebar](#) [Share This](#) [Show Bike Network](#) [Contact Us](#) [Login](#)

<http://mobilitylab.org/bikearlington/crowdsourcing/sharemap.php>

capital bikeshare

CAPITALBIKESHARE.COM  1-877-430-BIKE



County proposed locations



capital bikeshare

MONTGOMERY COUNTY DEPARTMENT OF TRANSPORTATION PROJECT TEAM

240-777-8380

Montgomery County Commuter Services

MCDOT.bikeshare@montgomerycountymd.gov

Gary Erenrich – Special Assistant to the Director for Metro Affairs, MCDOT

Sandra Brecher – Chief, Commuter Services, Division of Transit Services,
MCDOT

Anne Root, Planner, MCDOT

Paul DeMaio, MetroBike, LLC (consultant)